
Product Datasheet

NIPSNAP3A Antibody (orb1239366)

Description

NIPSNAP3A Antibody

Species/Host

Rabbit

Reactivity

Human, Mouse

Conjugation

Unconjugated

Tested

ELISA, IF, IHC-P, WB

Applications
Immunogen

NIPSNAP3A antibody was raised against a 16 amino acid synthetic peptide near the center of human NIPSNAP3A. The immunogen is located within amino acids 40 - 90 of NIPSNAP3A.

Target

NIPSNAP3A

Preservatives

NIPSNAP3A Antibody is supplied in PBS containing 0.02% sodium azide.

Form/Appearance

Liquid

Concentration

1 mg/mL

Storage

NIPSNAP3A antibody can be stored at 4°C for three months and -20°C, stable for up to one year. As with all antibodies care should be taken to avoid repeated freeze thaw cycles. Antibodies should not be exposed to prolonged high temperatures.

Note

For research use only

Application notes

NIPSNAP3A antibody can be used for detection of NIPSNAP3A by Western blot at 0.5 - 1 µg/mL. Antibody can also be used for immunohistochemistry starting at 2.5 µg/mL. For immunofluorescence start at 20 µg/mL. Antibody validated: Western Blot in mouse samples; Immunohistochemistry in mouse samples and Immunofluorescence in mouse samples. All other applications and species not yet tested.

Isotype

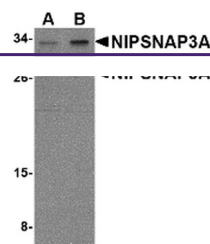
IgG

Clonality

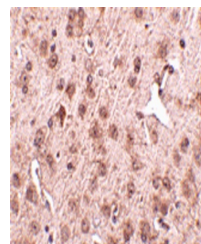
Polyclonal

Uniprot ID
[Q9UFN0](#)
NCBI
[NP_056284](#)
Dilution Range

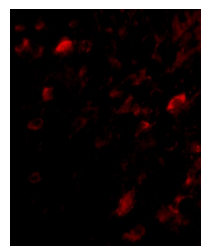
NIPSNAP3A antibody can be used for detection of NIPSNAP3A by Western blot at 0.5 - 1 µg/mL. Antibody can also be used for immunohistochemistry starting at 2.5 µg/mL. For immunofluorescence start at 20 µg/mL. Antibody



Western blot analysis of NIPSNAP3A in mo...



Immunohistochemistry of NIPSNAP3A in mou...



Immunofluorescence of NIPSNAP3A in Mouse...