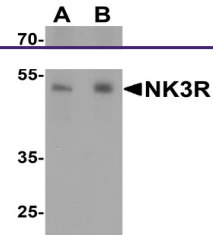


---

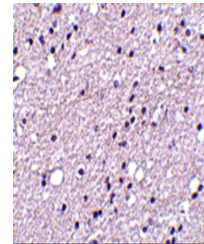
## Product Datasheet

### TACR3 Antibody (orb1239362)

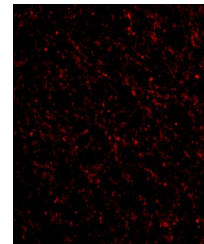
<b>Description</b>	TACR3 Antibody
<b>Species/Host</b>	Rabbit
<b>Reactivity</b>	Human, Mouse
<b>Conjugation</b>	Unconjugated
<b>Tested Applications</b>	ELISA, IF, IHC-P, WB
<b>Immunogen</b>	NK3R antibody was raised against a 18 amino acid synthetic peptide from near the center of human NK3R. The immunogen is located within amino acids 370 - 420 of NK3R.
<b>Target</b>	TACR3
<b>Preservatives</b>	NK3R Antibody is supplied in PBS containing 0.02% sodium azide.
<b>Form/Appearance</b>	Liquid
<b>Concentration</b>	1 mg/mL
<b>Storage</b>	NK3R antibody can be stored at 4°C up to one year. Antibodies should not be exposed to prolonged high temperatures.
<b>Note</b>	For research use only
<b>Application notes</b>	NK3R antibody can be used for detection of NK3R by Western blot at 0.5 - 2 µg/mL. Antibody can also be used for immunohistochemistry starting at 5 µg/mL. For immunofluorescence start at 20 µg/mL. Antibody validated: Western Blot in mouse samples; Immunohistochemistry in human samples and Immunofluorescence in human samples. All other applications and species not yet tested.
<b>Isotype</b>	IgG
<b>Clonality</b>	Polyclonal
<b>MW</b>	Predicted: 51 kDa Observed: 51 kDa
<b>Uniprot ID</b>	<a href="#">P29371</a>
<b>NCBI</b>	<a href="#">P29371</a>
<b>Dilution Range</b>	NK3R antibody can be used for detection of NK3R by Western blot at 0.5 - 2 µg/mL. Antibody can also be used for immunohistochemistry starting at 5 µg/mL. For immunofluorescence start at 20 µg/mL. Antibody validated: Western Blot in mouse samples; Immunohistochemistry in human samples and Immunofluorescence in human samples. All other



Western blot analysis of NK3R in RAW264....



Immunohistochemistry of NK3R in human br...



Immunofluorescence of NK3R in Human Brai...