

## Product Datasheet

### NOD2 Antibody (orb1239355)

## Description

## NOD2 Antibody

### Species/Host

Rabbit

### Reactivity

Human

### Conjugation

Unconjugated

### Tested

ELISA, ICC, IF, WB

### Applications

### Immunogen

NOD2 antibody was raised against a synthetic peptide corresponding to 16 amino acids at the amino terminus of human NOD2. The immunogen is located within the first 50 amino acids of NOD2.

### Target

NOD2

### Preservatives

NOD2 Antibody is supplied in PBS containing 0.02% sodium azide.

### Form/Appearance

Liquid

### Concentration

1 mg/mL

### Storage

NOD2 antibody can be stored at 4°C for three months and -20°C, stable for up to one year. As with all antibodies care should be taken to avoid repeated freeze thaw cycles. Antibodies should not be exposed to prolonged high temperatures.

### Note

For research use only

### Application notes

NOD2 antibody can be used for detection of NOD2 by Western blot at 1 to 2 µg/mL. Antibody can also be used for immunohistochemistry starting at 5 µg/mL. For immunofluorescence start at 10 µg/mL. Antibody validated: Western Blot in human samples; Immunocytochemistry in human samples and Immunofluorescence in human samples. All other applications and species not yet tested.

### Isotype

IgG

### Clonality

Polyclonal

### MW

Predicted: 114 kDa Observed: 100 kDa

### Uniprot ID

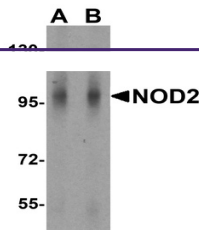
[Q9HC29](#)

### NCBI

[Q9HC29](#)

### Dilution Range

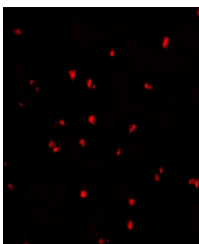
NOD2 antibody can be used for detection of NOD2 by Western blot at 1 to 2 µg/mL. Antibody can also be used for immunohistochemistry starting at 5 µg/mL. For immunofluorescence start at 10 µg/mL. Antibody validated: Western Blot in human samples;



Western blot analysis of NOD2 in human l...



Immunocytochemistry of NOD2 in Jurkat ce...



Immunofluorescence of NOD2 in Jurkat cel...