

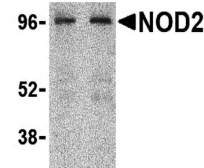
---

## Product Datasheet

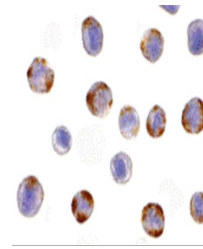
### NOD2 Antibody (orb1239354)

Description	NOD2 Antibody
<b>Species/Host</b>	Rabbit
<b>Reactivity</b>	Human
<b>Conjugation</b>	Unconjugated
<b>Tested Applications</b>	ELISA, ICC, IF, WB
<b>Immunogen</b>	Rabbit NOD2 polyclonal antibody was raised against a synthetic peptide corresponding to 14 amino acids at the carboxy terminus of human NOD2. The immunogen is located within the last 50 amino acids of NOD2.
<b>Target</b>	NOD2
<b>Preservatives</b>	NOD2 Antibody is supplied in PBS containing 0.02% sodium azide.
<b>Form/Appearance</b>	Liquid
<b>Concentration</b>	1 mg/mL
<b>Storage</b>	NOD2 antibody can be stored at 4°C for three months and -20°C, stable for up to one year. As with all antibodies care should be taken to avoid repeated freeze thaw cycles. Antibodies should not be exposed to prolonged high temperatures.
<b>Note</b>	For research use only
<b>Application notes</b>	NOD2 antibody can be used for detection of Noxa by Western blot at 2 to 4 µg/mL. Antibody can also be used for immunocytochemistry starting at 10 µg/mL. For immunofluorescence start at 20 µg/mL. Antibody validated: Western Blot in human samples; Immunocytochemistry in human samples and Immunofluorescence in human samples. All other applications and species not yet tested.
<b>Isotype</b>	IgG
<b>Clonality</b>	Polyclonal
<b>MW</b>	114 kDa
<b>Uniprot ID</b>	<a href="#">Q9HC29</a>
<b>NCBI</b>	<a href="#">Q9HC29</a>
<b>Dilution Range</b>	NOD2 antibody can be used for detection of Noxa by Western blot at 2 to 4 µg/mL. Antibody can also be used for immunocytochemistry starting at 10 µg/mL. For immunofluorescence start at 20 µg/mL. Antibody

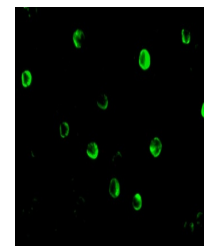
A B



Western blot analysis of NOD2 in HeLa ce...



Immunocytochemistry of NOD2 in HeLa cell...



Immunofluorescence of NOD2 in HeLa cells...