

Product Datasheet

NLRX1 Antibody (orb1239351)

Description

NLRX1 Antibody

Species/Host

Rabbit

Reactivity

Human, Mouse, Rat

Conjugation

Unconjugated

Tested

ELISA, IF, IHC-P, WB

Applications

Immunogen

NOD5 antibody was raised against a 14 amino acid synthetic peptide near the amino terminus of human NOD5. The immunogen is located within amino acids 70 - 120 of NOD5.

Target

NLRX1

Preservatives

NOD5 Antibody is supplied in PBS containing 0.02% sodium azide.

Form/Appearance

Liquid

Concentration

1 mg/mL

Storage

NOD5 antibody can be stored at 4°C for three months and -20°C, stable for up to one year. As with all antibodies care should be taken to avoid repeated freeze thaw cycles. Antibodies should not be exposed to prolonged high temperatures.

Note

For research use only

Application notes

NOD5 antibody can be used for detection of NOD5 by Western blot at 1 - 2 µg/mL. Antibody can also be used for immunohistochemistry starting at 10 µg/mL. For immunofluorescence start at 20 µg/mL. Antibody validated: Western Blot in rat samples; Immunohistochemistry in rat samples and Immunofluorescence in rat samples. All other applications and species not yet tested.

Isotype

IgG

Clonality

Polyclonal

Uniprot ID

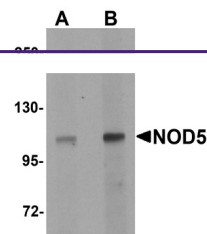
Q86UT6

NCBI

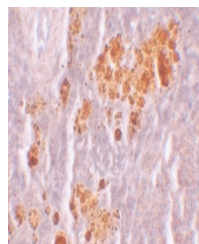
NP_078894

Dilution Range

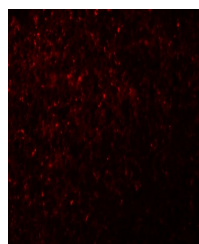
NOD5 antibody can be used for detection of NOD5 by Western blot at 1 - 2 µg/mL. Antibody can also be used for immunohistochemistry starting at 10 µg/mL. For immunofluorescence start at 20 µg/mL. Antibody validated: Western Blot in rat samples; Immunohistochemistry in rat samples and



Western blot analysis of NOD5 in rat spleen...



Immunohistochemistry of NOD5 in rat spleen...



Immunofluorescence of NOD5 in rat spleen...