
Product Datasheet

NLRP9 Antibody (orb1239350)

Description

NLRP9 Antibody

Species/Host

Rabbit

Reactivity

Human, Mouse

Conjugation

Unconjugated

Tested

ELISA, IF, IHC-P, WB

Applications
Immunogen

NOD6 antibody was raised against a 14 amino acid synthetic peptide near the amino terminus of human NOD6. The immunogen is located within amino acids 190 - 240 of NOD6.

Target

NLRP9

Preservatives

NOD6 Antibody is supplied in PBS containing 0.02% sodium azide.

Form/Appearance

Liquid

Concentration

1 mg/mL

Storage

NOD6 antibody can be stored at 4°C for three months and -20°C, stable for up to one year. As with all antibodies care should be taken to avoid repeated freeze thaw cycles. Antibodies should not be exposed to prolonged high temperatures.

Note

For research use only

Application notes

NOD6 antibody can be used for detection of NOD6 by Western blot at 1 µg/mL. Antibody can also be used for immunohistochemistry starting at 10 µg/mL. For immunofluorescence start at 20 µg/mL. Antibody validated: Western Blot in mouse samples; Immunohistochemistry in human samples and Immunofluorescence in human samples. All other applications and species not yet tested.

Isotype

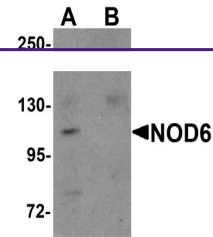
IgG

Clonality

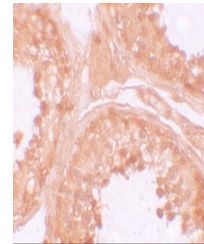
Polyclonal

Uniprot ID
[Q7RTR0](#)
NCBI
[Q7RTR0](#)
Dilution Range

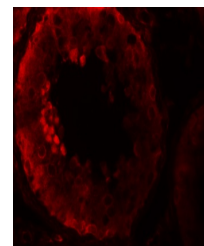
NOD6 antibody can be used for detection of NOD6 by Western blot at 1 µg/mL. Antibody can also be used for immunohistochemistry starting at 10 µg/mL. For immunofluorescence start at 20 µg/mL. Antibody validated: Western Blot in mouse samples; Immunohistochemistry in human samples and



Western blot analysis of NOD6 in EL4 cel...



Immunohistochemistry of NOD6 in human te...



Immunofluorescence of NOD6 in human test...