

---

## Product Datasheet

### NOSTRIN Antibody (orb1239346)

**Description**

NOSTRIN Antibody

**Species/Host**

Rabbit

**Reactivity**

Human, Mouse, Rat

**Conjugation**

Unconjugated

**Tested Applications**

ELISA, IF, IHC-P, WB

**Immunogen**

NOSTRIN antibody was raised against a 17 amino acid peptide near the carboxy terminus of human NOSTRIN. The immunogen is located within amino acids 430 - 480 of NOSTRIN.

**Target**

NOSTRIN

**Preservatives**

NOSTRIN antibody is supplied in PBS containing 0.02% sodium azide.

**Form/Appearance**

Liquid

**Concentration**

1 mg/mL

**Storage**

NOSTRIN antibody can be stored at 4°C for three months and -20°C, stable for up to one year.

**Note**

For research use only

**Application notes**

NOSTRIN antibody can be used for detection of NOSTRIN by Western blot at 1 - 2 µg/ml. Antibody can also be used for immunohistochemistry starting at 5 µg/mL. For immunofluorescence start at 20 µg/mL. Antibody validated: Western Blot in human samples; Immunohistochemistry in mouse samples and Immunofluorescence in mouse samples. All other applications and species not yet tested.

**Isotype**

IgG

**Clonality**

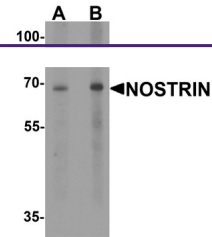
Polyclonal

**MW**

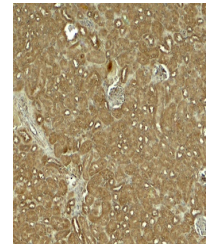
Predicted: 47, 53, 56, 62 kDa Observed: 68 kDa

**Uniprot ID**
[Q81VI9](#)
**NCBI**
[NP\\_443178](#)
**Dilution Range**

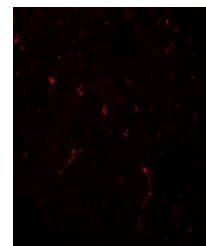
NOSTRIN antibody can be used for detection of NOSTRIN by Western blot at 1 - 2 µg/ml. Antibody can also be used for immunohistochemistry starting at 5 µg/mL. For immunofluorescence start at 20 µg/mL. Antibody validated: Western Blot in human samples; Immunohistochemistry in mouse samples and Immunofluorescence in mouse samples. All other applications and species not yet tested.



Western blot analysis of NOSTRIN in SW48...



Immunohistochemistry of NOSTRIN in mouse...



Immunofluorescence of NOSTRIN in mouse k...