
Product Datasheet

NOTUM Antibody (orb1239345)

Description

NOTUM Antibody

Species/Host

Rabbit

Reactivity

Human, Mouse, Rat

Conjugation

Unconjugated

Tested Applications

ELISA, IF, IHC-P, WB

Immunogen

NOTUM antibody was raised against a 19 amino acid synthetic peptide near the amino terminus of human NOTUM. The immunogen is located within amino acids 90 - 140 of NOTUM.

Target

NOTUM

Preservatives

NOTUM Antibody is supplied in PBS containing 0.02% sodium azide.

Form/Appearance

Liquid

Concentration

1 mg/mL

Storage

NOTUM antibody can be stored at 4°C for three months and -20°C, stable for up to one year. As with all antibodies care should be taken to avoid repeated freeze thaw cycles. Antibodies should not be exposed to prolonged high temperatures.

Note

For research use only

Application notes

NOTUM antibody can be used for detection of NOTUM by Western blot at 0.5 - 1 µg/mL. Antibody can also be used for immunohistochemistry starting at 2.5 µg/mL. For immunofluorescence start at 20 µg/mL. Antibody validated: Western Blot in human samples; Immunohistochemistry in human samples and Immunofluorescence in mouse samples. All other applications and species not yet tested.

Isotype

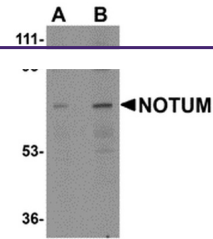
IgG

Clonality

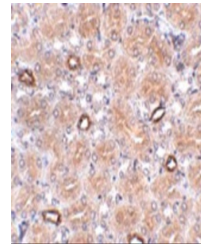
Polyclonal

Uniprot ID
[Q6P988](#)
NCBI
[NP_848588](#)
Dilution Range

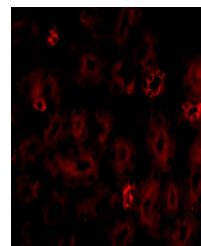
NOTUM antibody can be used for detection of NOTUM by Western blot at 0.5 - 1 µg/mL. Antibody can also be used for immunohistochemistry starting at 2.5 µg/mL. For immunofluorescence start at 20 µg/mL. Antibody validated: Western Blot in human samples; Immunohistochemistry in human samples



Western blot analysis of NOTUM in human ...



Immunohistochemistry of NOTUM in human b...



Immunofluorescence of NOTUM in Mouse Kid...