
Product Datasheet

NPAS3 Antibody (orb1239339)

Description

NPAS3 Antibody

Species/Host

Rabbit

Reactivity

Human, Mouse, Rat

Conjugation

Unconjugated

Tested Applications

ELISA, IF, IHC-P, WB

Immunogen

NPAS3 antibody was raised against a 28 amino acid synthetic peptide from near the amino terminus of human NPAS3. The immunogen is located within amino acids 40 - 90 of NPAS3.

Target

NPAS3

Preservatives

NPAS3 Antibody is supplied in PBS containing 0.02% sodium azide.

Form/Appearance

Liquid

Concentration

1 mg/mL

Storage

NPAS3 antibody can be stored at 4°C for three months and -20°C, stable for up to one year. As with all antibodies care should be taken to avoid repeated freeze thaw cycles. Antibodies should not be exposed to prolonged high temperatures.

Note

For research use only

Application notes

NPAS3 antibody can be used for detection of NPAS3 by Western blot at 0.5 - 2 µg/mL. Antibody can also be used for immunohistochemistry starting at 5 µg/mL. For immunofluorescence start at 20 µg/mL. Antibody validated: Western Blot in human samples; Immunohistochemistry in human samples and Immunofluorescence in human samples. All other applications and species not yet tested.

Isotype

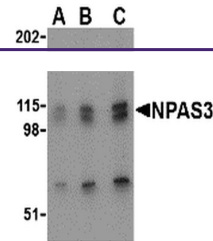
IgG

Clonality

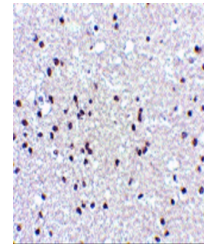
Polyclonal

Uniprot ID
Q8IXF0
NCBI
Q8IXF0
Dilution Range

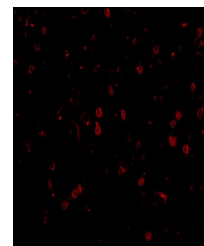
NPAS3 antibody can be used for detection of NPAS3 by Western blot at 0.5 - 2 µg/mL. Antibody can also be used for immunohistochemistry starting at 5 µg/mL. For immunofluorescence start at 20 µg/mL. Antibody validated: Western Blot in human samples; Immunohistochemistry in human samples



Western blot analysis of NPAS3 in SK-N-S...



Immunohistochemistry of NPAS3 in human b...



Immunofluorescence of NPAS3 in human bra...