

Product Datasheet

WDR74 Antibody (orb1239335)

Description

WDR74 Antibody

Species/Host

Rabbit

Reactivity

Human, Mouse, Rat

Conjugation

Unconjugated

Tested Applications

ELISA, IF, IHC-P, WB

Immunogen

NSA1 antibody was raised against an 18 amino acid synthetic peptide near the carboxy terminus of human NSA1. The immunogen is located within amino acids 320 - 370 of NSA1.

Target

WDR74

Preservatives

NSA1 Antibody is supplied in PBS containing 0.02% sodium azide.

Form/Appearance

Liquid

Concentration

1 mg/mL

Storage

NSA1 antibody can be stored at 4°C for three months and -20°C, stable for up to one year. As with all antibodies care should be taken to avoid repeated freeze thaw cycles. Antibodies should not be exposed to prolonged high temperatures.

Note

For research use only

Application notes

NSA1 antibody can be used for detection of NSA1 by Western blot at 1 - 2 µg/mL. Antibody can also be used for immunohistochemistry starting at 5 µg/mL. For immunofluorescence start at 20 µg/mL. Antibody validated: Western Blot in mouse samples; Immunohistochemistry in rat samples and Immunofluorescence in rat samples. All other applications and species not yet tested.

Isotype

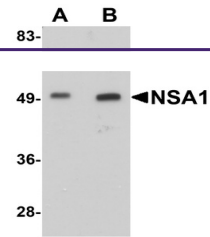
IgG

Clonality

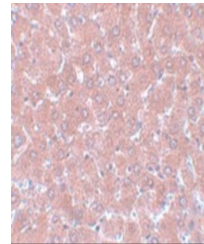
Polyclonal

Uniprot ID
[Q6RFH5](#)
NCBI
[Q6RFH5](#)
Dilution Range

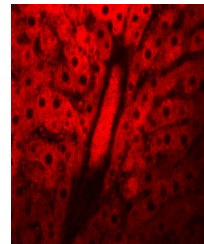
NSA1 antibody can be used for detection of NSA1 by Western blot at 1 - 2 µg/mL. Antibody can also be used for immunohistochemistry starting at 5 µg/mL. For immunofluorescence start at 20 µg/mL. Antibody validated: Western Blot in mouse samples; Immunohistochemistry in rat samples and



Western blot analysis of NSA1 in mouse l...



Immunohistochemistry of NSA1 in rat live...



Immunofluorescence of NSA1 in rat liver ...