
Product Datasheet

NDEL1 Antibody (orb1239333)

Description

NDEL1 Antibody

Species/Host

Rabbit

Reactivity

Human, Mouse

Conjugation

Unconjugated

Tested Applications

ELISA, ICC, IF, WB

Immunogen

Nudel antibody was raised against a peptide corresponding to 15 amino acids near the amino terminus of human Nudel. The immunogen is located within the first 50 amino acids of Nudel.

Target

NDEL1

Preservatives

Nudel Antibody is supplied in PBS containing 0.02% sodium azide.

Form/Appearance

Liquid

Concentration

1 mg/mL

Storage

Nudel antibody can be stored at 4°C for three months and -20°C, stable for up to one year. As with all antibodies care should be taken to avoid repeated freeze thaw cycles. Antibodies should not be exposed to prolonged high temperatures.

Note

For research use only

Application notes

Nudel antibody can be used for detection of Nudel by Western blot at 0.5 - 2 µg/mL. Antibody can also be used for immunocytochemistry starting at 2 µg/mL. For immunofluorescence start at 10 µg/mL. Antibody validated: Western Blot in human samples; Immunocytochemistry in human samples and Immunofluorescence in human samples. All other applications and species not yet tested.

Isotype

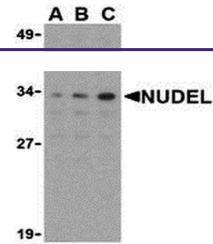
IgG

Clonality

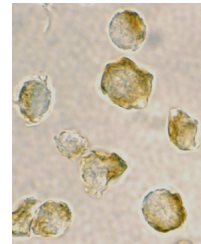
Polyclonal

Uniprot ID
[Q9GZM8](#)
NCBI
[AAF97497](#)
Dilution Range

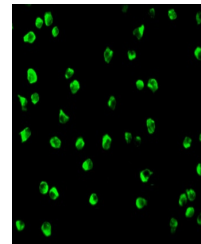
Nudel antibody can be used for detection of Nudel by Western blot at 0.5 - 2 µg/mL. Antibody can also be used for immunocytochemistry starting at 2 µg/mL. For immunofluorescence start at 10 µg/mL. Antibody validated: Western Blot in human samples; Immunocytochemistry in human samples and



Western blot analysis of Nudel in Jurkat...



Immunocytochemistry of Nudel in Jurkat c...



Immunofluorescence of Nudel in Jurkat ce...