
Product Datasheet

NUP160 Antibody (orb1239329)

Description

NUP160 Antibody

Species/Host

Rabbit

Reactivity

Human, Mouse, Rat

Conjugation

Unconjugated

Tested Applications

ELISA, IF, IHC-P, WB

Applications
Immunogen

NUP160 antibody was raised against a 14 amino acid synthetic peptide from near the carboxy terminus of human NUP160. The immunogen is located within the last 50 amino acids of NUP160.

Target

NUP160

Preservatives

NUP160 Antibody is supplied in PBS containing 0.02% sodium azide.

Form/Appearance

Liquid

Concentration

1 mg/mL

Storage

NUP160 antibody can be stored at 4°C for three months and -20°C, stable for up to one year. As with all antibodies care should be taken to avoid repeated freeze thaw cycles. Antibodies should not be exposed to prolonged high temperatures.

Note

For research use only

Application notes

NUP160 antibody can be used for detection of NUP160 by Western blot at 0.5 - 1 µg/mL. Antibody can also be used for immunohistochemistry starting at 2.5 µg/mL. For immunofluorescence start at 20 µg/mL. Antibody validated: Western Blot in rat samples; Immunohistochemistry in human samples and Immunofluorescence in human samples. All other applications and species not yet tested.

Isotype

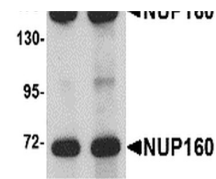
IgG

Clonality

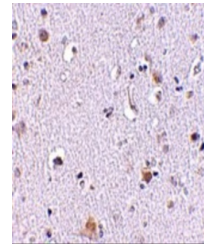
Polyclonal

Uniprot ID
[Q12769](#)
NCBI
[EAW67878.1](#)
Dilution Range

NUP160 antibody can be used for detection of NUP160 by Western blot at 0.5 - 1 µg/mL. Antibody can also be used for immunohistochemistry starting at 2.5 µg/mL. For immunofluorescence start at 20 µg/mL. Antibody validated: Western Blot in rat samples; Immunohistochemistry in human samples

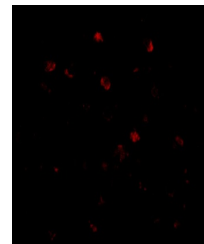
A B


Western blot analysis of NUP160 in rat b...



Immunohistochemistry of NUP160 in human

...



Immunofluorescence of NUP160 in Human Br...