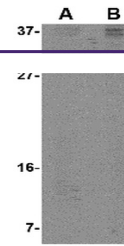
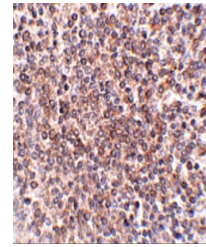

Product Datasheet

C12orf75 Antibody (orb1239327)

Description	C12orf75 Antibody
Species/Host	Rabbit
Reactivity	Human
Conjugation	Unconjugated
Tested Applications	ELISA, IHC-P, WB
Immunogen	OCC-1 antibody was raised against a 7 amino acid synthetic peptide near the carboxy terminus of human OCC-1. The immunogen is located within the last 50 amino acids of OCC-1.
Target	C12orf75
Preservatives	OCC-1 Antibody is supplied in PBS containing 0.02% sodium azide.
Form/Appearance	Liquid
Concentration	1 mg/mL
Storage	OCC-1 antibody can be stored at 4°C for three months and -20°C, stable for up to one year. As with all antibodies care should be taken to avoid repeated freeze thaw cycles. Antibodies should not be exposed to prolonged high temperatures.
Note	For research use only
Application notes	OCC-1 antibody can be used for detection of OCC-1 by Western blot at 2 - 4 µg/mL. In vitro transcription and translation of the OCC-1 cDNA yields polypeptides less than 9 kDa. Despite this, OCC-1 from cell lines is detected at ~28 kDa in SDS-PAGE. Antibody can also be used for immunohistochemistry starting at 2.5 µg/mL. Antibody validated: Western Blot in human samples and Immunohistochemistry in human samples. All other applications and species not yet tested.
Isotype	IgG
Clonality	Polyclonal
Uniprot ID	Q8TAD7
NCBI	AAH61920
Dilution Range	OCC-1 antibody can be used for detection of OCC-1 by Western blot at 2 - 4 µg/mL. In vitro transcription and translation of the OCC-1 cDNA yields polypeptides less than 9 kDa. Despite this, OCC-1



Western blot analysis of OCC-1 in 293 ce...



Immunohistochemistry of OCC-1 in human s...