
Product Datasheet

C12orf75 Antibody (orb1239326)

Description

C12orf75 Antibody

Species/Host

Rabbit

Reactivity

Human

Conjugation

Unconjugated

Tested

ELISA, IF, IHC-P, WB

Applications
Immunogen

OCC-1 antibody was raised against a 16 amino acid synthetic peptide near the amino terminus of human OCC-1. The immunogen is located within amino acids 10 - 60 of OCC-1.

Target

C12orf75

Preservatives

OCC-1 Antibody is supplied in PBS containing 0.02% sodium azide.

Form/Appearance

Liquid

Concentration

1 mg/mL

Storage

OCC-1 antibody can be stored at 4°C for three months and -20°C, stable for up to one year. As with all antibodies care should be taken to avoid repeated freeze thaw cycles. Antibodies should not be exposed to prolonged high temperatures.

Note

For research use only

Application notes

OCC-1 antibody can be used for detection of OCC-1 by Western blot at 2 µg/mL. In vitro transcription and translation of the OCC-1 cDNA yields polypeptides less than 9 kDa. Despite this, OCC-1 from cell lines is detected at ~28 kDa in SDS-PAGE. Antibody can also be used for immunohistochemistry starting at 2.5 µg/mL. For immunofluorescence start at 20 µg/mL. Antibody validated: Western Blot in human samples; Immunohistochemistry in human samples and Immunofluorescence in human samples. All other applications and species not yet tested.

Isotype

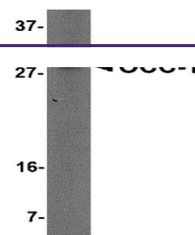
IgG

Clonality

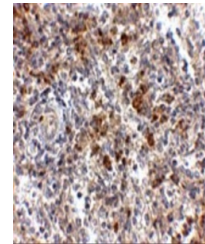
Polyclonal

Uniprot ID
[Q8TAD7](#)
NCBI
[AAH61920](#)
Dilution Range

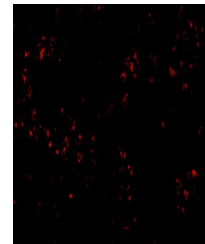
OCC-1 antibody can be used for detection of OCC-1 by Western blot at 2 µg/mL. In vitro transcription



Western blot analysis of OCC-1 in human ...



Immunohistochemistry of OCC-1 in human s...



Immunofluorescence of OCC-1 in human spl...