
Product Datasheet

RYBP Antibody (orb1239322)

Description

RYBP Antibody

Species/Host

Rabbit

Reactivity

Human, Mouse, Rat

Conjugation

Unconjugated

Tested

ELISA, IF, IHC-P, WB

Applications
Immunogen

DEDAF antibody was raised against a 14 amino acid peptide near the carboxy terminus of human DEDAF. The immunogen is located within the last 50 amino acids of DEDAF.

Target

RYBP

Preservatives

DEDAF Antibody is supplied in PBS containing 0.02% sodium azide.

Form/Appearance

Liquid

Concentration

1 mg/mL

Storage

DEDAF antibody can be stored at 4°C up to one year. Antibodies should not be exposed to prolonged high temperatures.

Note

For research use only

Application notes

DEDAF can be used for detection of DEDAF by Western blot at 1 µg/mL. Antibody can also be used for immunohistochemistry starting at 5 µg/mL. For immunofluorescence start at 20 µg/mL. Antibody validated: Western Blot in human and mouse samples; Immunohistochemistry in mouse samples and Immunofluorescence in human and mouse samples. All other applications and species not yet tested.

Isotype

IgG

Clonality

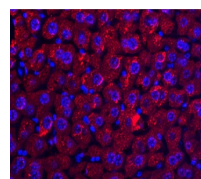
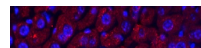
Polyclonal

MW

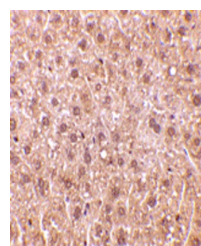
32 kDa

Uniprot ID
[Q8N488](#)
NCBI
[AF179286](#)
Dilution Range

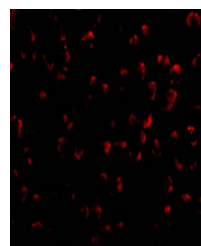
DEDAF can be used for detection of DEDAF by Western blot at 1 µg/mL. Antibody can also be used for immunohistochemistry starting at 5 µg/mL. For immunofluorescence start at 20 µg/mL. Antibody validated: Western Blot in human and mouse samples; Immunohistochemistry in mouse samples



Immunofluorescence of DEDAF in mouse liv...



Immunohistochemistry of DEDAF in mouse l...



Immunofluorescence of DEDAF in A549 cell...