

Product Datasheet

HTRA2 Antibody (orb1239318)

Description

HTRA2 Antibody

Species/Host

Rabbit

Reactivity

Human

Conjugation

Unconjugated

Tested

ELISA, IF, IHC-P, WB

Applications
Immunogen

OMI antibody was raised against a peptide corresponding to 16 amino acids near the C-terminus of human Omi. The immunogen is located within amino acids 70 - 120 of OMI.

Target

HTRA2

Preservatives

OMI Antibody is supplied in PBS containing 0.02% sodium azide.

Form/Appearance

Liquid

Concentration

1 mg/mL

Storage

OMI antibody can be stored at 4°C for three months and -20°C, stable for up to one year. As with all antibodies care should be taken to avoid repeated freeze thaw cycles. Antibodies should not be exposed to prolonged high temperatures.

Note

For research use only

Application notes

OMI antibody can be used for detection of OMI by Western blot at 0.5 to 2 µg/mL. Antibody can also be used for immunohistochemistry starting at 2 µg/mL. For immunofluorescence start at 20 µg/mL. Antibody validated: Western Blot in human samples; Immunohistochemistry in human samples and Immunofluorescence in human samples. All other applications and species not yet tested.

Isotype

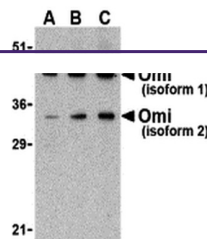
IgG

Clonality

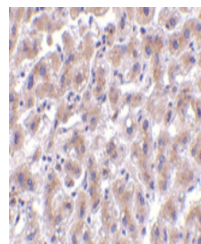
Polyclonal

Uniprot ID
O43464
NCBI
AAB94569
Dilution Range

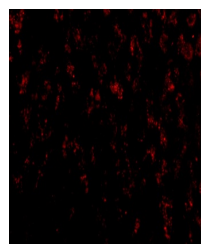
OMI antibody can be used for detection of OMI by Western blot at 0.5 to 2 µg/mL. Antibody can also be used for immunohistochemistry starting at 2 µg/mL. For immunofluorescence start at 20 µg/mL. Antibody validated: Western Blot in human samples; Immunohistochemistry in human samples and



Western blot analysis of OMI in U937 lys...



Immunohistochemistry of OMI in human liv...



Immunofluorescence of OMI in Human Liver...