
Product Datasheet

CX3CR1 Antibody (orb1239314)

Description

CX3CR1 Antibody

Species/Host

Rabbit

Reactivity

Human, Mouse, Rat

Conjugation

Unconjugated

Tested Applications

ELISA, FC, IF, IHC-P, WB

Immunogen

Anti-CX3CR1 antibody (orb1239314) was raised against a peptide corresponding to 20 amino acids near the amino terminus of mature human CX3CR1. The immunogen is located within the first 50 amino acids of CX3CR1.

Target

CX3CR1

Preservatives

CX3CR1 Antibody is supplied in PBS containing 0.02% sodium azide.

Form/Appearance

Liquid

Concentration

1 mg/mL

Storage

CX3CR1 antibody can be stored at 4°C for three months and -20°C, stable for up to one year. As with all antibodies care should be taken to avoid repeated freeze thaw cycles. Antibodies should not be exposed to prolonged high temperatures.

Note

For research use only

Isotype

IgG

Clonality

Polyclonal

MW

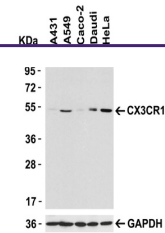
Predicted: 40-44 kD Observed: 50 kD

Uniprot ID
[P49238](#)
NCBI
[NP_001328](#)
Dilution Range

WB: 1 -2 µg/mL; IF: 10-20 µg/mL, IHC-P: 2 µg/mL; Flow: 0.1 µg/mL .Antibody validated: Western Blot in human, mouse and rat samples; Immunohistochemistry in rat samples; Immunofluorescence in human, mouse and rat samples; Flow cytometry in human samples. All other applications and species not yet tested.

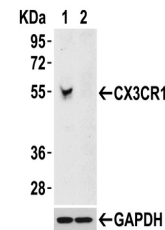
Expiration Date

12 months from date of receipt.



Western Blot Validation in Human Cells.

...



KD Validation in 293 Cells.

Loading: 15

...



Western Blot Validation in THP1 Cells.

L...