

---

## Product Datasheet

### C1QTNF3 Antibody (orb1239313)

**Description**

C1QTNF3 Antibody

**Species/Host**

Rabbit

**Reactivity**

Human, Mouse, Rat

**Conjugation**

Unconjugated

**Tested Applications**

ELISA, IF, IHC-P, WB

**Immunogen**

Anti-CTRP3 antibody (orb1239313) was raised against a peptide corresponding to 16 amino acids near the center of human CTRP3. The immunogen is located within amino acids 90-140 of CTRP3.

**Target**

C1QTNF3

**Preservatives**

CTRP3 Antibody is supplied in PBS containing 0.02% sodium azide.

**Form/Appearance**

Liquid

**Concentration**

1 mg/mL

**Storage**

CTRP3 antibody can be stored at 4°C for three months and -20°C, stable for up to one year. As with all antibodies care should be taken to avoid repeated freeze thaw cycles. Antibodies should not be exposed to prolonged high temperatures.

**Note**

For research use only

**Isotype**

IgG

**Clonality**

Polyclonal

**MW**

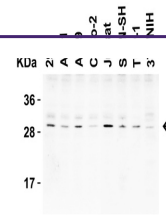
Predicted: 27kD  
Observed: 30 kD (Post-modification: 1 N-linked glycosylation)

**Uniprot ID**
[Q9BXJ4](#)
**NCBI**
[NP\\_852100](#)
**Dilution Range**

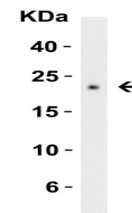
WB: 1 µg/mL; IHC: 2 µg/mL; IF: 10 µg/mL. Antibody validated: Western Blot in human, mouse and rat samples; Immunohistochemistry in mouse samples; Immunofluorescence in mouse samples. All other applications and species not yet tested.

**Expiration Date**

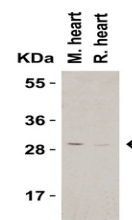
12 months from date of receipt.



Western Blot Validation in Human and Mou...



Western Blot Validation with Recombinant...



Western Blot Validation in Mouse and Rat...