
Product Datasheet

CTLA4 Antibody (orb1239311)

Description

CTLA4 Antibody

Species/Host

Mouse

Reactivity

Human

Conjugation

Unconjugated

Tested Applications

ELISA, ICC, IF, IHC-P, WB

Immunogen

CTLA-4 antibody was raised against the extracellular domain of human CTLA-4.

Target

CTLA4

Preservatives

CTLA-4 Antibody is supplied in PBS containing 0.02% sodium azide and 50% glycerol.

Form/Appearance

Liquid

Concentration

1 mg/mL

Storage

CTLA-4 antibody can be stored at 4°C for three months and -20°C, stable for up to one year. As with all antibodies care should be taken to avoid repeated freeze thaw cycles. Antibodies should not be exposed to prolonged high temperatures.

Note

For research use only

Application notes

CTLA-4 antibody can be used for detection of CTLA-4 by Western blot at 1 - 2 µg/mL. Antibody can also be used for immunohistochemistry starting at 5 µg/mL. For immunofluorescence start at 20 µg/mL. Antibody validated: Western Blot in human samples; Immunohistochemistry in human samples; Immunocytochemistry in human samples and Immunofluorescence in human samples. All other applications and species not yet tested.

Isotype

IgG1

Clonality

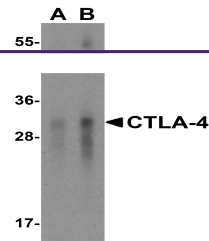
Monoclonal

MW

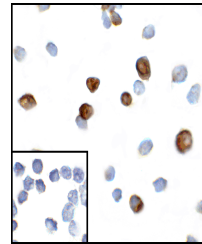
Predicted: 25 kDa Observed: 32 kDa

Uniprot ID
[P16410](#)
NCBI
[NP_005205](#)
Dilution Range

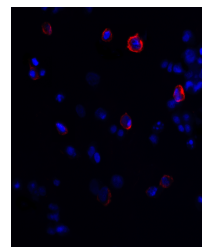
CTLA-4 antibody can be used for detection of CTLA-4 by Western blot at 1 - 2 µg/mL. Antibody can also be used for immunohistochemistry starting at 5 µg/mL. For immunofluorescence start at 20 µg/mL. Antibody validated: Western Blot in human samples; Immunohistochemistry in human samples;



Western blot analysis of CTLA-4 in overexpressing cells.



Immunocytochemistry of CTLA-4 in transfected cells.



Immunofluorescence of CTLA-4 in transfected cells.