
Product Datasheet

ORAI2 Antibody (orb1239310)

Description

ORAI2 Antibody

Species/Host

Rabbit

Reactivity

Human, Mouse

Conjugation

Unconjugated

Tested

ELISA, ICC, IF, WB

Applications
Immunogen

ORAI2 antibody was raised against a 15 amino acid synthetic peptide from near the carboxy terminus of human ORAI2. The immunogen is located within the last 50 amino acids of ORAI2.

Target

ORAI2

Preservatives

ORAI2 Antibody is supplied in PBS containing 0.02% sodium azide.

Form/Appearance

Liquid

Concentration

1 mg/mL

Storage

ORAI2 antibody can be stored at 4°C for three months and -20°C, stable for up to one year. As with all antibodies care should be taken to avoid repeated freeze thaw cycles. Antibodies should not be exposed to prolonged high temperatures.

Note

For research use only

Application notes

ORAI2 antibody can be used for detection of ORAI2 by Western blot at 1 - 4 µg/mL. Antibody can also be used for immunocytochemistry starting at 5 µg/mL. For immunofluorescence start at 20 µg/mL. Antibody validated: Western Blot in human samples; Immunocytochemistry in human samples and Immunofluorescence in human samples. All other applications and species not yet tested.

Isotype

IgG

Clonality

Polyclonal

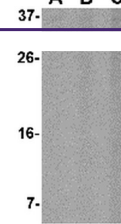
MW

Predicted: 19, 28 kDa Observed: 29 kDa

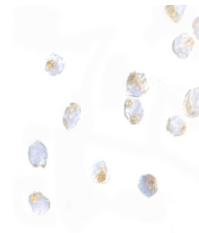
Uniprot ID
[Q96SN7](#)
NCBI
[Q96SN7](#)
Dilution Range

ORAI2 antibody can be used for detection of ORAI2 by Western blot at 1 - 4 µg/mL. Antibody can also be used for immunocytochemistry starting at 5 µg/mL. For immunofluorescence start at 20 µg/mL. Antibody validated: Western Blot in human samples;

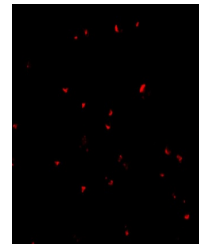
A B C



Western blot analysis of ORAI2 in Jurkat...



Immunocytochemistry of ORAI2 in Jurkat c...



Immunofluorescence of ORAI2 in Jurkat ce...