
Product Datasheet

ORAI3 Antibody (orb1239309)

Description

ORAI3 Antibody

Species/Host

Rabbit

Reactivity

Human, Mouse, Rat

Conjugation

Unconjugated

Tested Applications

ELISA, ICC, IHC-P, WB

Immunogen

ORAI3 antibody was raised against a 15 amino acid synthetic peptide from near the amino terminus of human ORAI3. The immunogen is located within the first 50 amino acids of ORAI3.

Target

ORAI3

Preservatives

ORAI3 Antibody is supplied in PBS containing 0.02% sodium azide.

Form/Appearance

Liquid

Concentration

1 mg/mL

Storage

ORAI3 antibody can be stored at 4°C for three months and -20°C, stable for up to one year. As with all antibodies care should be taken to avoid repeated freeze thaw cycles. Antibodies should not be exposed to prolonged high temperatures.

Note

For research use only

Application notes

ORAI3 antibody can be used for detection of ORAI3 by Western blot at 1 - 4 µg/mL. Antibody can also be used for immunocytochemistry starting at 10 µg/mL and Immunohistochemistry starting at 2 µg/mL. Antibody validated: Western Blot in mouse samples; Immunohistochemistry in mouse samples and Immunocytochemistry in mouse samples. All other applications and species not yet tested.

Isotype

IgG

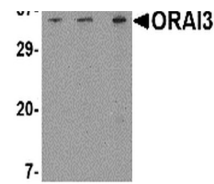
Clonality

Polyclonal

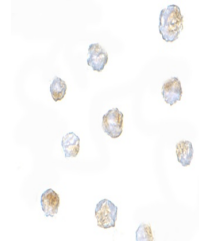
Uniprot ID
[Q9BRQ5](#)
NCBI
[Q9BRQ5](#)
Dilution Range

ORAI3 antibody can be used for detection of ORAI3 by Western blot at 1 - 4 µg/mL. Antibody can also be used for immunocytochemistry starting at 10 µg/mL and Immunohistochemistry starting at 2 µg/mL. Antibody validated: Western Blot in mouse samples; Immunohistochemistry in mouse samples

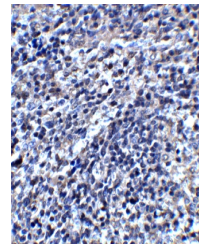
A B C



Western blot analysis of ORAI3 in A20 ce...



Immunocytochemistry of ORAI3 in A20 cell...



Immunohistochemistry of ORAI3 in mouse s...