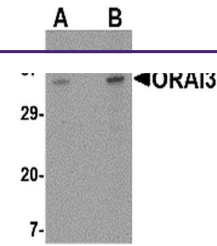

Product Datasheet

ORAI3 Antibody (orb1239308)

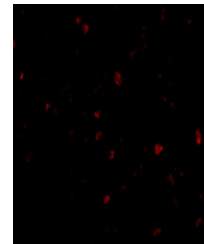
Description	ORA13 Antibody
Species/Host	Rabbit
Reactivity	Human, Mouse
Conjugation	Unconjugated
Tested Applications	ELISA, ICC, IF, WB
Immunogen	ORA13 antibody was raised against a 19 amino acid synthetic peptide from near the carboxy terminus of human ORA13. The immunogen is located within amino acids 200 - 250 of ORA13.
Target	ORA13
Preservatives	ORA13 Antibody is supplied in PBS containing 0.02% sodium azide.
Form/Appearance	Liquid
Concentration	1 mg/mL
Storage	ORA13 antibody can be stored at 4°C for three months and -20°C, stable for up to one year. As with all antibodies care should be taken to avoid repeated freeze thaw cycles. Antibodies should not be exposed to prolonged high temperatures.
Note	For research use only
Application notes	ORA13 antibody can be used for detection of ORA13 by Western blot at 2 - 4 µg/mL. Antibody can also be used for immunocytochemistry starting at 5 µg/mL. For immunofluorescence start at 10 µg/mL. Antibody validated: Western Blot in mouse samples; Immunocytochemistry in mouse samples and Immunofluorescence in mouse samples. All other applications and species not yet tested.
Isotype	IgG
Clonality	Polyclonal
MW	Predicted: 32 kDa Observed: 34 kDa
Uniprot ID	Q9BRQ5
NCBI	Q9BRQ5
Dilution Range	ORA13 antibody can be used for detection of ORA13 by Western blot at 2 - 4 µg/mL. Antibody can also be used for immunocytochemistry starting at 5 µg/mL. For immunofluorescence start at 10 µg/mL. Antibody validated: Western Blot in mouse samples;



Western blot analysis of ORA13 in A20 ce...



Immunocytochemistry of ORA13 in A20 cell...



Immunofluorescence of ORA13 in A20 cells...