

---

## Product Datasheet

### CTLA4 Antibody (orb1239307)

**Description**

CTLA4 Antibody

**Species/Host**

Mouse

**Reactivity**

Human

**Conjugation**

Unconjugated

**Tested Applications**

ELISA, ICC, IF, IHC-P, WB

**Immunogen**

CTLA-4 antibody was raised against the extracellular domain of human CTLA-4.

**Target**

CTLA4

**Preservatives**

CTLA-4 Antibody is supplied in PBS containing 0.02% sodium azide and 50% glycerol.

**Form/Appearance**

Liquid

**Concentration**

1 mg/mL

**Storage**

CTLA-4 antibody can be stored at 4°C for three months and -20°C, stable for up to one year. As with all antibodies care should be taken to avoid repeated freeze thaw cycles. Antibodies should not be exposed to prolonged high temperatures.

**Note**

For research use only

**Application notes**

CTLA-4 antibody can be used for detection of CTLA-4 by Western blot at 0.125 - 0.25 µg/mL. Antibody can also be used for immunohistochemistry starting at 5 µg/mL. For immunofluorescence start at 20 µg/mL. Antibody validated: Western Blot in human samples; Immunohistochemistry in human samples; Immunocytochemistry in human samples and Immunofluorescence in human samples. All other applications and species not yet tested.

**Isotype**

IgG1

**Clonality**

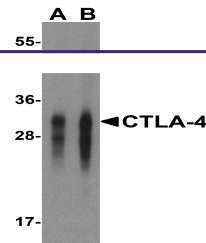
Monoclonal

**MW**

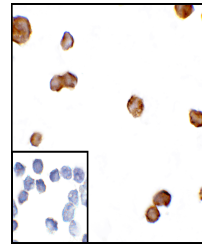
Predicted: 25 kDa Observed: 32 kDa

**Uniprot ID**
[P16410](#)
**NCBI**
[NP\\_005205](#)
**Dilution Range**

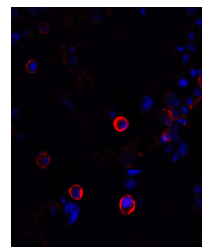
CTLA-4 antibody can be used for detection of CTLA-4 by Western blot at 0.125 - 0.25 µg/mL. Antibody can also be used for immunohistochemistry starting at 5 µg/mL. For immunofluorescence start at 20 µg/mL. Antibody validated: Western Blot in human samples; Immunohistochemistry in human samples;



Western blot analysis of CTLA-4 in overexpressing cells.



Immunocytochemistry of CTLA-4 in transfected cells.



Immunofluorescence of CTLA-4 in transfected cells.