

---

## Product Datasheet

### CLU Antibody (orb1239303)

**Description**

CLU Antibody

**Species/Host**

Rabbit

**Reactivity**

Human, Mouse

**Conjugation**

Unconjugated

**Tested Applications**

ELISA, IF, IHC-P, WB

**Immunogen**

Clusterin antibody was raised recombinant human Clusterin isoform 1.

**Target**

CLU

**Preservatives**

Clusterin Antibody is supplied in PBS containing 0.02% sodium azide.

**Form/Appearance**

Liquid

**Concentration**

1 mg/mL

**Storage**

Clusterin antibody can be stored at 4°C for three months and -20°C, stable for up to one year. As with all antibodies care should be taken to avoid repeated freeze thaw cycles. Antibodies should not be exposed to prolonged high temperatures.

**Note**

For research use only

**Application notes**

Clusterin antibody can be used for the detection of Clusterin by Western blot at 0.5 - 1 µg/mL. Antibody can also be used for immunohistochemistry starting at 5 µg/mL. For immunofluorescence start at 20 µg/mL. Antibody validated: Western Blot in human samples; Immunohistochemistry in human and mouse samples and Immunofluorescence in human and mouse samples. All other applications and species not yet tested.

**Isotype**

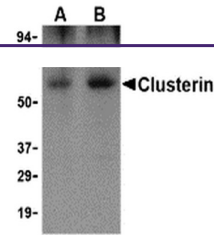
IgG

**Clonality**

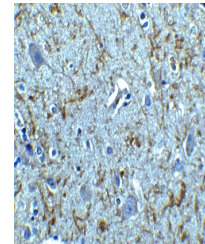
Polyclonal

**Uniprot ID**
**P10909**
**NCBI**
**NP\_001822**
**Dilution Range**

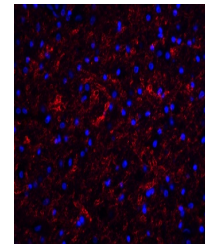
Clusterin antibody can be used for the detection of Clusterin by Western blot at 0.5 - 1 µg/mL. Antibody can also be used for immunohistochemistry starting at 5 µg/mL. For immunofluorescence start at 20 µg/mL. Antibody validated: Western Blot in human samples; Immunohistochemistry in human and mouse samples and Immunofluorescence in human



Western blot analysis of Clusterin in hu...



Immunohistochemistry of Clusterin in hum...



Immunofluorescence of Clusterin in human...