
Product Datasheet

P2RX7 Antibody (orb1239302)

Description

P2RX7 Antibody

Species/Host

Rabbit

Reactivity

Human, Mouse

Conjugation

Unconjugated

Tested Applications

ELISA, ICC, IF, WB

Immunogen

P2RX7 antibody was raised against a 17 amino acid peptide near the carboxy terminus of human P2RX7. The immunogen is located within the last 50 amino acids of P2RX7.

Target

P2RX7

Preservatives

P2RX7 antibody is supplied in PBS containing 0.02% sodium azide.

Form/Appearance

Liquid

Concentration

1 mg/mL

Storage

P2RX7 antibody can be stored at 4°C for three months and -20°C, stable for up to one year.

Note

For research use only

Application notes

P2RX7 antibody can be used for detection of P2RX7 by Western blot at 1 - 2 µg/ml. Antibody can also be used for immunocytochemistry starting at 5 µg/mL. For immunofluorescence start at 20 µg/mL. Antibody validated: Western Blot in mouse samples; Immunocytochemistry in mouse samples and Immunofluorescence in mouse samples. All other applications and species not yet tested.

Isotype

IgG

Clonality

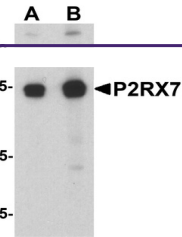
Polyclonal

MW

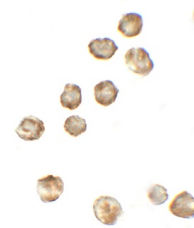
Predicted: 34, 47, 65 kDa Observed: 54 kDa

Uniprot ID
[Q99572](#)
NCBI
[NP_002553](#)
Dilution Range

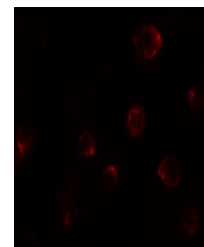
P2RX7 antibody can be used for detection of P2RX7 by Western blot at 1 - 2 µg/ml. Antibody can also be used for immunocytochemistry starting at 5 µg/mL. For immunofluorescence start at 20 µg/mL. Antibody validated: Western Blot in mouse samples; Immunocytochemistry in mouse samples and Immunofluorescence in mouse samples. All other applications and species not yet tested.



Western blot analysis of P2RX7 in 3T3 ce...



Immunocytochemistry of P2RX7 in 3T3 cell...



Immunofluorescence of P2RX7 in 3T3 cells...