

Product Datasheet

TP53INP1 Antibody (orb1239300)

Description

TP53INP1 Antibody

Species/Host

Rabbit

Reactivity

Human, Mouse, Rat

Conjugation

Unconjugated

Tested

ELISA, IF, IHC-P, WB

Applications

Immunogen

p53DINP1 antibody was raised with a synthetic peptide corresponding to 14 amino acids near the amino terminus of human p53DINP1. The immunogen is located within the first 50 amino acids of p53DINP1.

Target

TP53INP1

Preservatives

p53DINP1 Antibody is supplied in PBS containing 0.02% sodium azide.

Form/Appearance

Liquid

Concentration

1 mg/mL

Storage

p53DINP1 antibody can be stored at 4°C for three months and -20°C, stable for up to one year. As with all antibodies care should be taken to avoid repeated freeze thaw cycles. Antibodies should not be exposed to prolonged high temperatures.

Note

For research use only

Application notes

p53DINP1 antibody can be used for detection of p53DINP1 by Western blot at 0.5 - 1 µg/mL. Antibody can also be used for immunohistochemistry starting at 2 µg/mL. For immunofluorescence start at 20 µg/mL. Antibody validated: Western Blot in human samples; Immunohistochemistry in mouse samples and Immunofluorescence in human samples. All other applications and species not yet tested.

Isotype

IgG

Clonality

Polyclonal

MW

Predicted: 18, 27 kDa Observed: 30 kDa

Uniprot ID

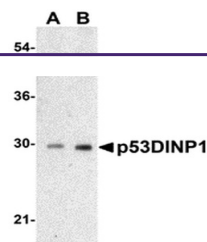
[Q96A56](#)

NCBI

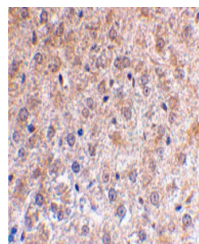
[Q96A56](#)

Dilution Range

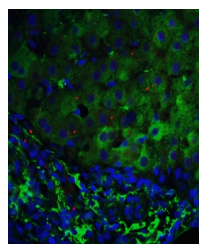
p53DINP1 antibody can be used for detection of p53DINP1 by Western blot at 0.5 - 1 µg/mL. Antibody can also be used for immunohistochemistry starting at 2 µg/mL. For immunofluorescence start at 20



Western blot analysis of p53DINP1 expres...



Immunohistochemical staining of mouse li...



Immunofluorescence of p53DINP1 in human ...