
Product Datasheet

RRM2B Antibody (orb1239299)

Description

RRM2B Antibody

Species/Host

Rabbit

Reactivity

Human, Mouse, Rat

Conjugation

Unconjugated

Tested

ELISA, IF, IHC-P, WB

Applications
Immunogen

p53R2 antibody was raised against a 16 amino acid peptide near the amino terminus of human p53R2. The immunogen is located within the first 50 amino acids of p53R2.

Target

RRM2B

Preservatives

p53R2 Antibody is supplied in PBS containing 0.02% sodium azide.

Form/Appearance

Liquid

Concentration

1 mg/mL

Storage

p53R2 antibody can be stored at 4°C for three months and -20°C, stable for up to one year. As with all antibodies care should be taken to avoid repeated freeze thaw cycles. Antibodies should not be exposed to prolonged high temperatures.

Note

For research use only

Application notes

p53R2 antibody can be used for detection of p53R2 by Western blot at 1 µg/mL. Antibody can also be used for immunohistochemistry starting at 1 µg/mL. For immunofluorescence start at 20 µg/mL. Antibody validated: Western Blot in mouse samples; Immunohistochemistry in human samples and Immunofluorescence in human samples. All other applications and species not yet tested.

Isotype

IgG

Clonality

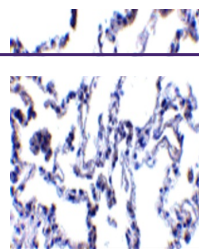
Polyclonal

MW

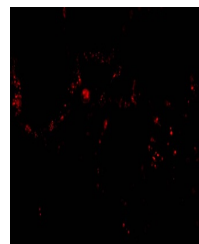
Predicted: 39 kDa Observed: 43 kDa

Uniprot ID
[Q7LG56](#)
NCBI
[BAA92434](#)
Dilution Range

p53R2 antibody can be used for detection of p53R2 by Western blot at 1 µg/mL. Antibody can also be used for immunohistochemistry starting at 1 µg/mL. For immunofluorescence start at 20 µg/mL. Antibody validated: Western Blot in mouse samples;



Immunohistochemistry of p53R2 in human L...



Immunofluorescence of p53R2 in Human Lun...