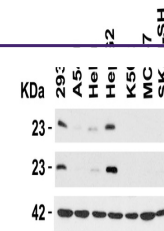
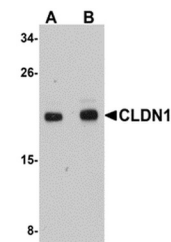

Product Datasheet

CLDN1 Antibody (orb1239298)

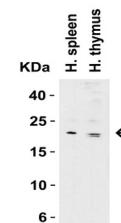
Description	CLDN1 Antibody
Species/Host	Rabbit
Reactivity	Human, Rat
Conjugation	Unconjugated
Tested Applications	ELISA, ICC, IF, WB
Immunogen	Anti-CLDN1 antibody (orb1239298) was raised against a peptide corresponding to 20 amino acids near the carboxy terminus of human CLDN1. The immunogen is located within the last 50 amino acids of CLDN1.
Target	CLDN1
Preservatives	CLDN1 Antibody is supplied in PBS containing 0.02% sodium azide.
Form/Appearance	Liquid
Concentration	1 mg/mL
Storage	CLDN1 antibody can be stored at 4°C for three months and -20°C, stable for up to one year. As with all antibodies care should be taken to avoid repeated freeze thaw cycles. Antibodies should not be exposed to prolonged high temperatures.
Note	For research use only
Isotype	IgG
Clonality	Polyclonal
MW	Predicted: 23kD Observed: 23 kD
Uniprot ID	O95832
NCBI	CAG33419
Dilution Range	WB: 1-2 µg/mL; ICC: 5 µg/mL; IF: 20 µg/mL. Antibody validated: Western Blot in human and rat samples; Immunocytochemistry in human samples; Immunofluorescence in human samples. All other applications and species not yet tested.
Expiration Date	12 months from date of receipt.



Independent Antibody Validation (IAV) vi...



Western Blot Validation in Human HepG2 C...



Western Blot Validation in Human Tissue

...