

---

## Product Datasheet

### CIDEA Antibody (orb1239296)

**Description**

CIDEA Antibody

**Species/Host**

Rabbit

**Reactivity**

Human, Mouse

**Conjugation**

Unconjugated

**Tested Applications**

ELISA, IF, IHC-P, WB

**Immunogen**

CIDE-A antibody was raised against an 18 amino acid peptide near the carboxy terminus of mouse CIDE-A. The immunogen is located within the last 50 amino acids of CIDE-A.

**Target**

CIDEA

**Preservatives**

CIDE-A Antibody is supplied in PBS containing 0.02% sodium azide.

**Form/Appearance**

Liquid

**Concentration**

1 mg/mL

**Storage**

CIDE-A antibody can be stored at 4°C up to one year. Antibodies should not be exposed to prolonged high temperatures.

**Note**

For research use only

**Application notes**

CIDE-A antibody can be used for detection of CIDE-A by Western blot at 0.5 µg/mL. Antibody can also be used for immunohistochemistry starting at 2.5 µg/mL. For immunofluorescence start at 20 µg/mL. Antibody validated: Western Blot in mouse samples; Immunohistochemistry in human and mouse samples and Immunofluorescence in human and mouse samples. All other applications and species not yet tested.

**Isotype**

IgG

**Clonality**

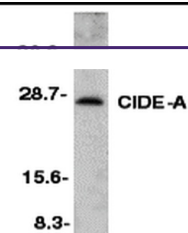
Polyclonal

**MW**

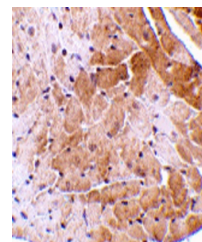
25 kDa

**Uniprot ID**
[O60543](#)
**NCBI**
[NP\\_031728](#)
**Dilution Range**

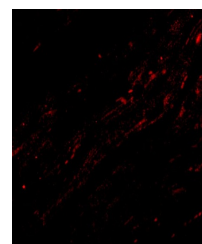
CIDE-A antibody can be used for detection of CIDE-A by Western blot at 0.5 µg/mL. Antibody can also be used for immunohistochemistry starting at 2.5 µg/mL. For immunofluorescence start at 20 µg/mL. Antibody validated: Western Blot in mouse samples; Immunohistochemistry in human and



Western blot analysis of CIDE-A in mouse...



Immunohistochemistry of CIDE-A in mouse ...



Immunofluorescence of CIDE-A in Mouse He...