
Product Datasheet

PAK7 Antibody (orb1239293)

Description

PAK7 Antibody

Species/Host

Rabbit

Reactivity

Human

Conjugation

Unconjugated

Tested Applications

ELISA, ICC, IF, WB

Immunogen

PAK5 antibody was raised against a 13 amino acid synthetic peptide from near the center of human PAK5. The immunogen is located within amino acids 240 - 290 of PAK5.

Target

PAK7

Preservatives

PAK5 Antibody is supplied in PBS containing 0.02% sodium azide.

Form/Appearance

Liquid

Concentration

1 mg/mL

Storage

PAK5 antibody can be stored at 4°C for three months and -20°C, stable for up to one year. As with all antibodies care should be taken to avoid repeated freeze thaw cycles. Antibodies should not be exposed to prolonged high temperatures.

Note

For research use only

Application notes

PAK5 antibody can be used for the detection of PAK5 by Western blot at 2 - 4 µg/mL. Antibody can also be used for immunocytochemistry starting at 2 µg/mL. For immunofluorescence start at 10 µg/mL. Antibody validated: Western Blot in human samples; Immunocytochemistry in human samples and Immunofluorescence in human samples. All other applications and species not yet tested.

Isotype

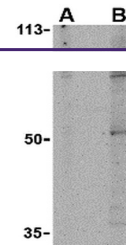
IgG

Clonality

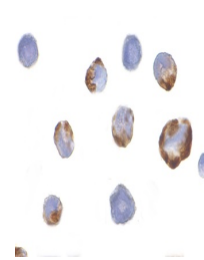
Polyclonal

Uniprot ID
[Q9P286](#)
NCBI
[Q9P286](#)
Dilution Range

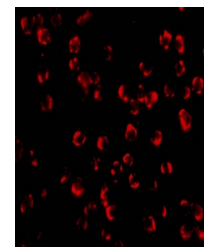
PAK5 antibody can be used for the detection of PAK5 by Western blot at 2 - 4 µg/mL. Antibody can also be used for immunocytochemistry starting at 2 µg/mL. For immunofluorescence start at 10 µg/mL. Antibody validated: Western Blot in human samples; Immunocytochemistry in human samples and



Western blot analysis of PAK5 in T24 lys...



Immunocytochemistry of PAK5 in K562 cell...



Immunofluorescence of PAK5 in K562 cells...