

## Product Datasheet

### CUL9 Antibody (orb1239288)

**Description**

CUL9 Antibody

**Species/Host**

Rabbit

**Reactivity**

Human, Mouse

**Conjugation**

Unconjugated

**Tested**

ELISA, ICC, IF, WB

**Applications**
**Immunogen**

PARC antibody was raised against a 17 amino acid synthetic peptide from near the carboxy terminus of human PARC. The immunogen is located within the last 50 amino acids of PARC.

**Target**

CUL9

**Preservatives**

PARC Antibody is supplied in PBS containing 0.02% sodium azide.

**Form/Appearance**

Liquid

**Concentration**

1 mg/mL

**Storage**

PARC antibody can be stored at 4°C for three months and -20°C, stable for up to one year. As with all antibodies care should be taken to avoid repeated freeze thaw cycles. Antibodies should not be exposed to prolonged high temperatures.

**Note**

For research use only

**Application notes**

PARC antibody can be used for the detection of PARC by Western blot at 1 - 2 µg/mL. Antibody can also be used for immunocytochemistry starting at 1 µg/mL. For immunofluorescence start at 2 µg/mL. Antibody validated: Western Blot in human samples; Immunocytochemistry in human samples and Immunofluorescence in human samples. All other applications and species not yet tested.

**Isotype**

IgG

**Clonality**

Polyclonal

**Uniprot ID**

[Q8IWT3](#)

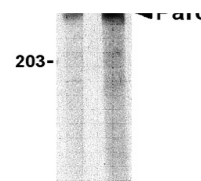
**NCBI**

[NP\\_055904](#)

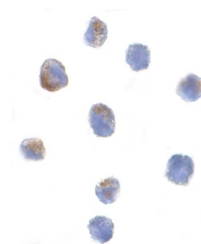
**Dilution Range**

PARC antibody can be used for the detection of PARC by Western blot at 1 - 2 µg/mL. Antibody can also be used for immunocytochemistry starting at 1 µg/mL. For immunofluorescence start at 2 µg/mL. Antibody validated: Western Blot in human samples; Immunocytochemistry in human samples and

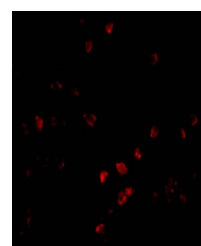
A B



Western blot analysis of PARC in Daudi I...



Immunocytochemistry of Parc in Daudi cel...



Immunofluorescence of Bcl-G in Daudi cel...