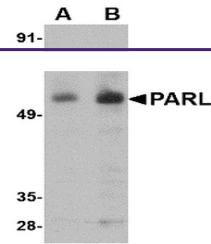


---

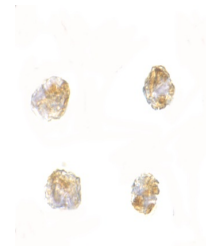
## Product Datasheet

### PARL Antibody (orb1239286)

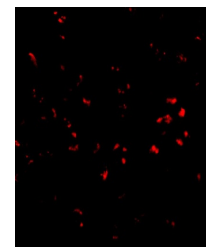
<b>Description</b>	PARL Antibody
<b>Species/Host</b>	Rabbit
<b>Reactivity</b>	Human, Mouse, Rat
<b>Conjugation</b>	Unconjugated
<b>Tested Applications</b>	ELISA, ICC, IF, WB
<b>Immunogen</b>	PARL antibody was raised against a 15 amino acid synthetic peptide from near the amino terminus of human PARL. The immunogen is located within amino acids 40 - 90 of PARL.
<b>Target</b>	PARL
<b>Preservatives</b>	PARL Antibody is supplied in PBS containing 0.02% sodium azide.
<b>Form/Appearance</b>	Liquid
<b>Concentration</b>	1 mg/mL
<b>Storage</b>	PARL antibody can be stored at 4°C for three months and -20°C, stable for up to one year. As with all antibodies care should be taken to avoid repeated freeze thaw cycles. Antibodies should not be exposed to prolonged high temperatures.
<b>Note</b>	For research use only
<b>Application notes</b>	PARL antibody can be used for detection of PARL by Western blot at 1 - 2 µg/mL. Despite its predicted molecular weight of ~42kDa, PARL is observed at a higher molecular weight in SDS-PAGE. Antibody can also be used for immunocytochemistry starting at 2.5 µg/mL. For immunofluorescence start at 20 µg/mL. Antibody validated: Western Blot in mouse samples; Immunocytochemistry in mouse samples and Immunofluorescence in mouse samples. All other applications and species not yet tested.
<b>Isotype</b>	IgG
<b>Clonality</b>	Polyclonal
<b>Uniprot ID</b>	<b>Q9H300</b>
<b>NCBI</b>	<b>Q9H300</b>
<b>Dilution Range</b>	PARL antibody can be used for detection of PARL by Western blot at 1 - 2 µg/mL. Despite its predicted molecular weight of ~42kDa, PARL is observed at a higher molecular weight in SDS-PAGE. Antibody can



Western blot analysis of PARL in 3T3 cel...



Immunocytochemistry of PARL in 3T3 cells...



Immunofluorescence of PARL in 3T3 cells ...