
Product Datasheet

PCDH12 Antibody (orb1239285)

Description

PCDH12 Antibody

Species/Host

Rabbit

Reactivity

Human, Mouse, Rat

Conjugation

Unconjugated

Tested Applications

ELISA, IHC-P, WB

Immunogen

PCDH12 antibody was raised against a 17 amino acid synthetic peptide near the amino terminus of human PCDH12. The immunogen is located within amino acids 30 - 80 of PCDH12.

Target

PCDH12

Preservatives

PCDH12 Antibody is supplied in PBS containing 0.02% sodium azide.

Form/Appearance

Liquid

Concentration

1 mg/mL

Storage

PCDH12 antibody can be stored at 4°C for three months and -20°C, stable for up to one year. As with all antibodies care should be taken to avoid repeated freeze thaw cycles. Antibodies should not be exposed to prolonged high temperatures.

Note

For research use only

Application notes

PCDH12 antibody can be used for detection of PCDH12 by Western blot at 1 µg/mL. Antibody can also be used for immunohistochemistry starting at 5 µg/mL. Antibody validated: Western Blot in human samples and Immunohistochemistry in rat samples. All other applications and species not yet tested.

Isotype

IgG

Clonality

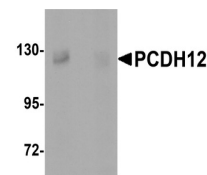
Polyclonal

MW

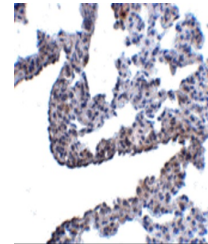
Predicted: 128 kDa Observed: 125 kDa

Uniprot ID
[Q9NPG4](#)
NCBI
[NP_057664](#)
Dilution Range

PCDH12 antibody can be used for detection of PCDH12 by Western blot at 1 µg/mL. Antibody can also be used for immunohistochemistry starting at 5 µg/mL. Antibody validated: Western Blot in human samples and Immunohistochemistry in rat samples. All other applications and species not yet tested.

A B


Western blot analysis of PCDH12 in K562 ...



Immunohistochemistry of PCDH12 in rat lu...