

---

## Product Datasheet

### PCDH18 Antibody (orb1239284)

**Description**

PCDH18 Antibody

**Species/Host**

Rabbit

**Reactivity**

Human, Mouse, Rat

**Conjugation**

Unconjugated

**Tested**

ELISA, IF, IHC-P, WB

**Applications**
**Immunogen**

PCDH18 antibody was raised against a 17 amino acid synthetic peptide near the amino terminus of human PCDH18. The immunogen is located within amino acids 50 - 100 of PCDH18.

**Target**

PCDH18

**Preservatives**

PCDH18 Antibody is supplied in PBS containing 0.02% sodium azide.

**Form/Appearance**

Liquid

**Concentration**

1 mg/mL

**Storage**

PCDH18 antibody can be stored at 4°C for three months and -20°C, stable for up to one year. As with all antibodies care should be taken to avoid repeated freeze thaw cycles. Antibodies should not be exposed to prolonged high temperatures.

**Note**

For research use only

**Application notes**

PCDH18 antibody can be used for detection of PCDH18 by Western blot at 2 µg/mL. Antibody can also be used for immunohistochemistry starting at 2.5 µg/mL. For immunofluorescence start at 20 µg/mL. Antibody validated: Western Blot in human samples; Immunohistochemistry in mouse samples and Immunofluorescence in mouse samples. All other applications and species not yet tested.

**Isotype**

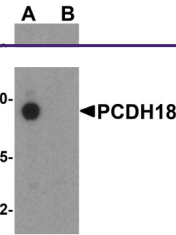
IgG

**Clonality**

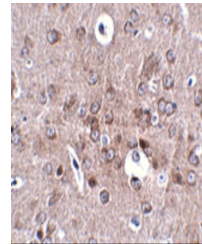
Polyclonal

**Uniprot ID**
[Q9HCL0](#)
**NCBI**
[NP\\_061908](#)
**Dilution Range**

PCDH18 antibody can be used for detection of PCDH18 by Western blot at 2 µg/mL. Antibody can also be used for immunohistochemistry starting at 2.5 µg/mL. For immunofluorescence start at 20 µg/mL. Antibody validated: Western Blot in human samples; Immunohistochemistry in mouse samples

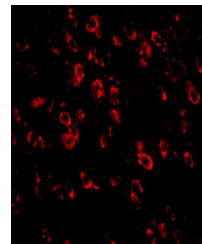


Western blot analysis of PCDH18 in HepG2...



Immunohistochemistry of PCDH18 in mouse

...



Immunofluorescence of PCDH18 in Mouse Br...