
Product Datasheet

CDNF Antibody (orb1239283)

Description

CDNF Antibody

Species/Host

Rabbit

Reactivity

Human, Mouse, Rat

Conjugation

Unconjugated

Tested

ELISA, IF, IHC-P, WB

Applications
Immunogen

CDNF antibody was raised against a 9 amino acid synthetic peptide from near the carboxy terminus of human CDNF. The immunogen is located within the last 50 amino acids of CDNF.

Target

CDNF

Preservatives

CDNF Antibody is supplied in PBS containing 0.02% sodium azide.

Form/Appearance

Liquid

Concentration

1 mg/mL

Storage

CDNF antibody can be stored at 4°C for three months and -20°C, stable for up to one year. As with all antibodies care should be taken to avoid repeated freeze thaw cycles. Antibodies should not be exposed to prolonged high temperatures.

Note

For research use only

Application notes

CDNF antibody can be used for detection of CDNF by Western blot at 2 - 4 µg/mL. Antibody can also be used for immunohistochemistry starting at 2.5 µg/mL. For immunofluorescence start at 20 µg/mL. Antibody validated: Western Blot in mouse samples; Immunohistochemistry in human and mouse samples and Immunofluorescence in human and mouse samples. All other applications and species not yet tested.

Isotype

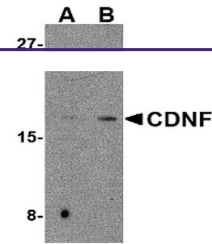
IgG

Clonality

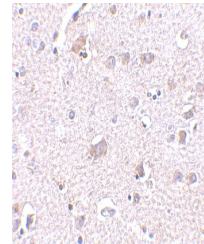
Polyclonal

Uniprot ID
[Q49AH0](#)
NCBI
[Q49AH0](#)
Dilution Range

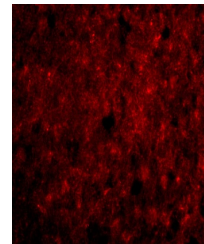
CDNF antibody can be used for detection of CDNF by Western blot at 2 - 4 µg/mL. Antibody can also be used for immunohistochemistry starting at 2.5 µg/mL. For immunofluorescence start at 20 µg/mL. Antibody validated: Western Blot in mouse



Western blot analysis of CDNF in mouse brain tissue.



Immunohistochemistry of CDNF in human brain tissue.



Immunofluorescence of CDNF in Human Brain tissue.