

---

## Product Datasheet

### PDGFB Antibody (orb1239269)

**Description**

PDGFB Antibody

**Species/Host**

Rabbit

**Reactivity**

Human, Mouse, Rat

**Conjugation**

Unconjugated

**Tested Applications**

ELISA, IF, WB

**Immunogen**

Rabbit polyclonal PDGF-B antibody was raised against a 19 amino acid peptide near the carboxy terminus of human PDGF-B. The immunogen is located within the last 50 amino acids of PDGF-B.

**Target**

PDGFB

**Preservatives**

PDGF-B Antibody is supplied in PBS containing 0.02% sodium azide.

**Form/Appearance**

Liquid

**Concentration**

1 mg/mL

**Storage**

PDGF-B antibody can be stored at 4°C for three months and -20°C, stable for up to one year.

**Note**

For research use only

**Application notes**

PDGF-B antibody can be used for detection of PDGF-B by Western blot at 1 - 2 µg/mL. Antibody validated: Western Blot in rat samples and Immunofluorescence in human samples. All other applications and species not yet tested.

**Isotype**

IgG

**Clonality**

Polyclonal

**MW**

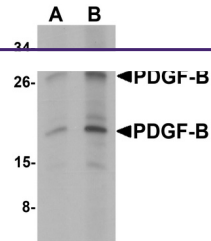
Predicted: 27 kDa

**Uniprot ID**
[P01127](#)
**NCBI**
[NP\\_002599](#)
**Dilution Range**

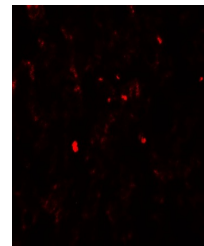
PDGF-B antibody can be used for detection of PDGF-B by Western blot at 1 - 2 µg/mL. Antibody validated: Western Blot in rat samples and Immunofluorescence in human samples. All other applications and species not yet tested.

**Expiration Date**

12 months from date of receipt.



Western blot analysis of PDGF-B in rat l...



Immunofluorescence of PDGF-B in human li...