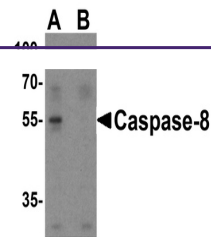
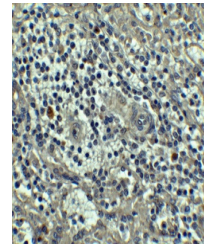

Product Datasheet

CASP8 Antibody (orb1239264)

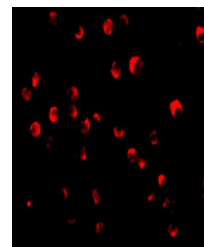
Description	CASP8 Antibody
Species/Host	Rabbit
Reactivity	Human, Mouse, Rat
Conjugation	Unconjugated
Tested Applications	ELISA, ICC, IF, IHC-P, WB
Immunogen	Caspase-8 antibody was raised against a 16 amino acid synthetic peptide from near the carboxy terminus of human Caspase-8 isoform A. The immunogen is located within the last 50 amino acids of Caspase-8.
Target	CASP8
Preservatives	Caspase-8 Antibody is supplied in PBS containing 0.02% sodium azide.
Form/Appearance	Liquid
Concentration	1 mg/mL
Storage	Caspase-8 antibody can be stored at 4°C up to one year. Antibodies should not be exposed to prolonged high temperatures.
Note	For research use only
Application notes	Caspase-8 antibody can be used for the detection of caspase-8 by Western blot at 0.5 to 2 µg/mL. Antibody can also be used for immunocytochemistry starting at 2 µg/mL and immunohistochemistry starting at 5 µg/mL. For immunofluorescence start at 20 µg/mL. Antibody validated: Western Blot in human, mouse, and rat samples; Immunohistochemistry in human samples; Immunocytochemistry in human samples and Immunofluorescence in human samples. All other applications and species not yet tested.
Isotype	IgG
Clonality	Polyclonal
MW	55 kDa
Uniprot ID	Q14790
NCBI	NP_001219
Dilution Range	Caspase-8 antibody can be used for the detection of caspase-8 by Western blot at 0.5 to 2 µg/mL. Antibody can also be used for immunocytochemistry



Western blot analysis of caspase-8 in Ju...



Immunohistochemistry of Caspase-8 in hum...



Immunofluorescence of Caspase-8 in Jurka...