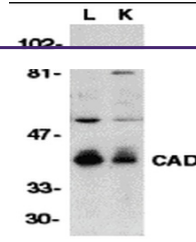
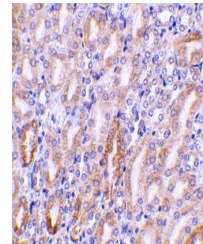

Product Datasheet

Dffb Antibody (orb1239262)

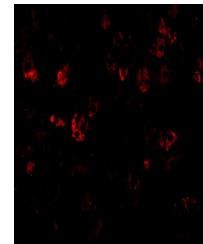
Description	Dffb Antibody
Species/Host	Rabbit
Reactivity	Mouse
Conjugation	Unconjugated
Tested Applications	ELISA, IF, IHC-P, WB
Immunogen	CAD antibody was raised against a 16 amino acid peptide near the carboxy terminus of murine CAD. The immunogen is located within the last 50 amino acids of CAD.
Target	Dffb
Preservatives	CAD Antibody is supplied in PBS containing 0.02% sodium azide.
Form/Appearance	Liquid
Concentration	1 mg/ml
Storage	CAD antibody can be stored at 4°C for three months and -20°C, stable for up to one year. As with all antibodies care should be taken to avoid repeated freeze thaw cycles. Antibodies should not be exposed to prolonged high temperatures.
Note	For research use only
Application notes	CAD antibody antibody can be used for detection of CAD by Western blot at 0.5 µg/mL. A 40 kDa band should be detected. Antibody can also be used for immunohistochemistry starting at 5 µg/mL. For immunofluorescence start at 5 µg/mL. Antibody validated: Western Blot in mouse samples; Immunohistochemistry in mouse samples and Immunofluorescence in mouse samples. All other applications and species not yet tested.
Isotype	IgG
Clonality	Polyclonal
MW	40 kDa
Uniprot ID	O54788
NCBI	O54788
Dilution Range	CAD antibody antibody can be used for detection of CAD by Western blot at 0.5 µg/mL. A 40 kDa band should be detected. Antibody can also be used for immunohistochemistry starting at 5 µg/mL. For



Western blot analysis of CAD in mouse lu...



Immunohistochemistry of CAD in mouse kid...



Immunofluorescence of CAD in Mouse Kidne...