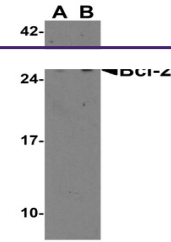


---

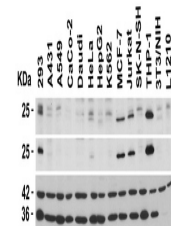
## Product Datasheet

### BCL2 Antibody (orb1239256)

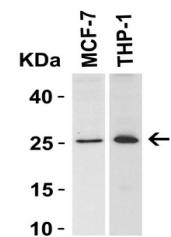
<b>Description</b>	BCL2 Antibody
<b>Species/Host</b>	Rabbit
<b>Conjugation</b>	Unconjugated
<b>Tested Applications</b>	ELISA, IF, IHC-P, WB
<b>Immunogen</b>	Anti-Bcl-2 antibody (orb1239256) was raised against a peptide corresponding to 15 amino acids near the amino terminus of human Bcl-2. The immunogen is located within the first 50 amino acids of Bcl-2.
<b>Target</b>	BCL2
<b>Preservatives</b>	Bcl-2 Antibody is supplied in PBS containing 0.02% sodium azide.
<b>Form/Appearance</b>	Liquid
<b>Concentration</b>	1 mg/mL
<b>Storage</b>	Bcl-2antibody can be stored at 4°C for three months and -20°C, stable for up to one year. As with all antibodies care should be taken to avoid repeated freeze thaw cycles. Antibodies should not be exposed to prolonged high temperatures.
<b>Note</b>	For research use only
<b>Isotype</b>	IgG
<b>Clonality</b>	Polyclonal
<b>MW</b>	Predicted: 26kD Observed: 26 kD
<b>Uniprot ID</b>	<a href="#">P10415</a>
<b>NCBI</b>	<a href="#">AAH27258</a>
<b>Dilution Range</b>	WB: 1-2µg/mL; IHC-P: 2 µg/mL; IF: 10 µg/mL. Antibody validated: Western Blot in human and mouse samples; Immunohistochemistry in human and mouse samples ; Immunofluorescence in human and mouse samples. All other applications and species not yet tested.
<b>Expiration Date</b>	12 months from date of receipt.



Western Blot Validation in Human and Mou...



Independent Antibody Validation (IAV) vi...



Western Blot Validation in Human Cell Li...