

---

## Product Datasheet

### PEAR1 Antibody (orb1239253)

**Description**

PEAR1 Antibody

**Species/Host**

Rabbit

**Reactivity**

Human, Mouse, Rat

**Conjugation**

Unconjugated

**Tested Applications**

ELISA, IF, IHC-P, WB

**Immunogen**

PEAR1 antibody was raised against a 16 amino acid synthetic peptide near the carboxy terminus of human PEAR1. The immunogen is located within the last 50 amino acids of PEAR1.

**Target**

PEAR1

**Preservatives**

PEAR1 Antibody is supplied in PBS containing 0.02% sodium azide.

**Form/Appearance**

Liquid

**Concentration**

1 mg/mL

**Storage**

PEAR1 antibody can be stored at 4°C for three months and -20°C, stable for up to one year. As with all antibodies care should be taken to avoid repeated freeze thaw cycles. Antibodies should not be exposed to prolonged high temperatures.

**Note**

For research use only

**Application notes**

PEAR1 antibody can be used for detection of PEAR1 by Western blot at 1 µg/mL. Antibody can also be used for immunohistochemistry starting at 2.5 µg/mL. For immunofluorescence start at 20 µg/mL. Antibody validated: Western Blot in rat samples; Immunohistochemistry in human samples and Immunofluorescence in human samples. All other applications and species not yet tested.

**Isotype**

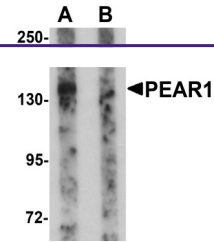
IgG

**Clonality**

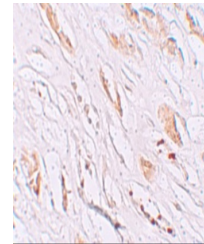
Polyclonal

**Uniprot ID**
[Q5VY43](#)
**NCBI**
[NP\\_001073940](#)
**Dilution Range**

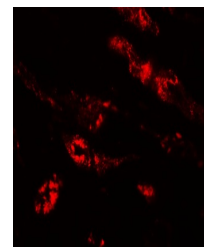
PEAR1 antibody can be used for detection of PEAR1 by Western blot at 1 µg/mL. Antibody can also be used for immunohistochemistry starting at 2.5 µg/mL. For immunofluorescence start at 20 µg/mL. Antibody validated: Western Blot in rat samples; Immunohistochemistry in human samples



Western blot analysis of PEAR1 in rat kidney tissue.



Immunohistochemistry of PEAR1 in human kidney tissue.



Immunofluorescence of PEAR1 in human kidney tissue.