

## Product Datasheet

### PSENEN Antibody (orb1239251)

**Description**
**PSENEN Antibody**
**Species/Host**

Rabbit

**Reactivity**

Human, Mouse, Rat

**Conjugation**

Unconjugated

**Tested**

ELISA, IF, WB

**Applications**
**Immunogen**

PEN2 antibody was raised against a 13 amino acid synthetic peptide from near the carboxy terminus of human PEN2. The immunogen is located within the last 50 amino acids of PEN2.

**Target**

PSENEN

**Preservatives**

PEN2 Antibody is supplied in PBS containing 0.02% sodium azide.

**Form/Appearance**

Liquid

**Concentration**

1 mg/mL

**Storage**

PEN2 antibody can be stored at 4°C for three months and -20°C, stable for up to one year. As with all antibodies care should be taken to avoid repeated freeze thaw cycles. Antibodies should not be exposed to prolonged high temperatures.

**Note**

For research use only

**Application notes**

PEN2 antibody can be used for detection of PEN2 by Western blot at 0.5 - 2 µg/mL. Antibody can also be used for immunohistochemistry starting at 20 µg/mL. Antibody validated: Western Blot in human samples and Immunofluorescence in human samples. All other applications and species not yet tested.

**Isotype**

IgG

**Clonality**

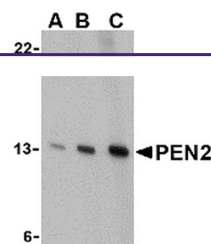
Polyclonal

**Uniprot ID**
**Q9NZ42**
**NCBI**
**NP\_758844**
**Dilution Range**

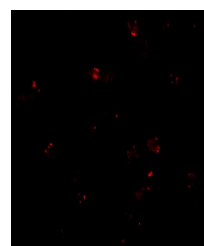
PEN2 antibody can be used for detection of PEN2 by Western blot at 0.5 - 2 µg/mL. Antibody can also be used for immunohistochemistry starting at 20 µg/mL. Antibody validated: Western Blot in human samples and Immunofluorescence in human samples. All other applications and species not yet tested.

**Expiration Date**

12 months from date of receipt.



Western blot analysis of PEN2 in K562 ce...



Immunofluorescence of PEN2 in K562 cells...