

Product Datasheet

PSENEN Antibody (orb1239250)

Description

PSENEN Antibody

Species/Host

Rabbit

Reactivity

Human, Mouse, Rat

Conjugation

Unconjugated

Tested

ELISA, IF, IHC-P, WB

Applications

Immunogen

PEN2 antibody was raised against a 13 amino acid synthetic peptide from near the amino terminus of human PEN2. The immunogen is located within the first 50 amino acids of PEN2.

Target

PSENEN

Preservatives

PEN2 Antibody is supplied in PBS containing 0.02% sodium azide.

Form/Appearance

Liquid

Concentration

1 mg/mL

Storage

PEN2 antibody can be stored at 4°C for three months and -20°C, stable for up to one year. As with all antibodies care should be taken to avoid repeated freeze thaw cycles. Antibodies should not be exposed to prolonged high temperatures.

Note

For research use only

Application notes

PEN2 antibody can be used for detection of PEN2 by Western blot at 0.5 - 1 µg/mL. Antibody can also be used for immunohistochemistry starting at 2.5 µg/mL. For immunofluorescence start at 20 µg/mL. Antibody validated: Western Blot in mouse samples; Immunohistochemistry in rat samples and Immunofluorescence in rat samples. All other applications and species not yet tested.

Isotype

IgG

Clonality

Polyclonal

Uniprot ID

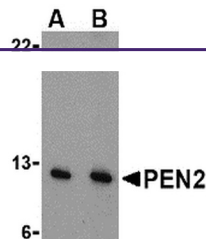
Q9NZ42

NCBI

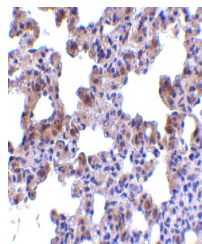
NP_758844

Dilution Range

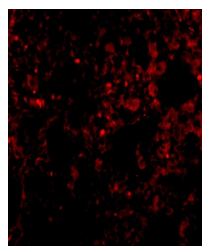
PEN2 antibody can be used for detection of PEN2 by Western blot at 0.5 - 1 µg/mL. Antibody can also be used for immunohistochemistry starting at 2.5 µg/mL. For immunofluorescence start at 20 µg/mL. Antibody validated: Western Blot in mouse samples; Immunohistochemistry in rat samples and



Western blot analysis of PEN2 in A-20 ce...



Immunohistochemistry of PEN2 in rat lung...



Immunofluorescence of PEN2 in Rat Lung C...