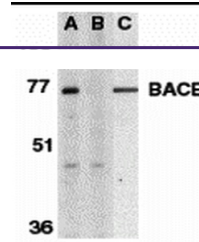
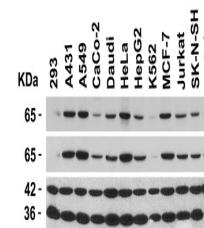

Product Datasheet

BACE1 Antibody (orb1239248)

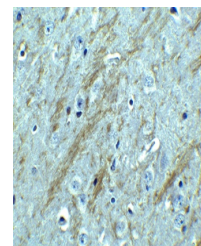
Description	BACE1 Antibody
Species/Host	Rabbit
Conjugation	Unconjugated
Tested Applications	ELISA, ICC, IF, IHC-P, WB
Immunogen	Anti-BACE antibody (orb1239248) was raised against a peptide corresponding to 17 amino acids near the carboxy terminus of human BACE. The immunogen is located within the last 50 amino acids of BACE.
Target	BACE1
Preservatives	BACE Antibody is supplied in PBS containing 0.02% sodium azide.
Form/Appearance	Liquid
Concentration	1 mg/mL
Storage	BACE antibody can be stored at 4°C for three months and -20°C, stable for up to one year. As with all antibodies care should be taken to avoid repeated freeze thaw cycles. Antibodies should not be exposed to prolonged high temperatures.
Note	For research use only
Isotype	IgG
Clonality	Polyclonal
MW	Predicted: 55kD Observed: 65kD (Post-modification: 4 N-linked glycosylation)
Uniprot ID	P56817
NCBI	AF190725
Dilution Range	WB: 1 µg/mL; IHC-P: 2.5 µg/mL; ICC: 10 µg/mL; IF: 20 µg/mL. Antibody validated: Western Blot in human and mouse samples; Immunohistochemistry, Immunocytochemistry and Immunofluorescence in mouse samples. All other applications and species not yet tested.
Expiration Date	12 months from date of receipt.



Western Blot Validation of BACE. Loading...



Independent Antibody Validation (IAV) vi...



Immunohistochemistry Validation of BACE ...