

Product Datasheet

ANP32A Antibody (orb1239246)

Description

ANP32A Antibody

Species/Host

Rabbit

Reactivity

Human, Mouse, Rat

Conjugation

Unconjugated

Tested

ELISA, IHC-P, WB

Applications

Immunogen

PHAP antibody was raised with a synthetic peptide corresponding to amino acids at amino terminus of human PHAP. The immunogen is located within the first 50 amino acids of PHAP.

Target

ANP32A

Preservatives

PHAP Antibody is supplied in PBS containing 0.02% sodium azide.

Form/Appearance

Liquid

Concentration

1 mg/mL

Storage

PHAP antibody can be stored at 4°C for three months and -20°C, stable for up to one year. As with all antibodies care should be taken to avoid repeated freeze thaw cycles. Antibodies should not be exposed to prolonged high temperatures.

Note

For research use only

Application notes

PHAP antibody can be used for detection of all three identified isoforms of PHAP including PHAP I, PHAP I2a, and PHAP III by Western blot at 1 µg/mL. Antibody can also be used for immunohistochemistry starting at 1 µg/mL. Antibody validated: Western Blot in human samples and Immunocytochemistry in human samples. All other applications and species not yet tested.

Isotype

IgG

Clonality

Polyclonal

Uniprot ID

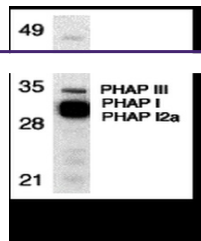
[P39687](#)

NCBI

[P39687](#)

Dilution Range

PHAP antibody can be used for detection of all three identified isoforms of PHAP including PHAP I, PHAP I2a, and PHAP III by Western blot at 1 µg/mL. Antibody can also be used for immunohistochemistry starting at 1 µg/mL. Antibody validated: Western Blot in human samples and



Western blot analysis of PHAP expression...



Immunocytochemistry of PHAP in Raji cell...