

## Product Datasheet

### ANP32A Antibody (orb1239245)

## Description

ANP32A Antibody

## Species/Host

Rabbit

## Conjugation

Unconjugated

## Tested

## Applications

ELISA, IF, IHC-P, WB

## Immunogen

PHAP antibody was raised with a synthetic peptide corresponding to amino acids at carboxy terminus of human PHAP I. The immunogen is located within the last 50 amino acids of PHAP.

## Target

ANP32A

## Preservatives

PHAP Antibody is supplied in PBS containing 0.02% sodium azide.

## Form/Appearance

Liquid

## Concentration

1 mg/mL

## Storage

PHAP antibody can be stored at 4°C for three months and -20°C, stable for up to one year. As with all antibodies care should be taken to avoid repeated freeze thaw cycles. Antibodies should not be exposed to prolonged high temperatures.

## Note

For research use only

## Application notes

PHAP antibody can be used for detection of PHAP I and PHAP III by Western blot at 1 µg/mL. At approximately 35 kDa and 32 kDa a band can be detected. Antibody can also be used for immunohistochemistry starting at 10 µg/mL. For immunofluorescence start at 20 µg/mL. Antibody validated: Western Blot in human samples; Immunohistochemistry in human samples and Immunofluorescence in human samples. All other applications and species not yet tested.

## Isotype

IgG

## Clonality

Polyclonal

## MW

35 kDa

## Uniprot ID

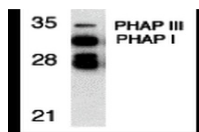
**P39687**

## NCBI

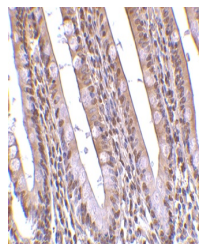
**P39687**

## Dilution Range

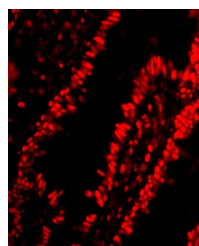
PHAP antibody can be used for detection of PHAP I and PHAP III by Western blot at 1 µg/mL. At approximately 35 kDa and 32 kDa a band can be detected. Antibody can also be used for



Western blot analysis of PHAP expression...



Immunohistochemistry of PHAP in human small intestine...



Immunofluorescence of PHAP in human small intestine...