

---

## Product Datasheet

### PIBF1 Antibody (orb1239233)

**Description**

PIBF1 Antibody

**Species/Host**

Rabbit

**Reactivity**

Human, Mouse, Rat

**Conjugation**

Unconjugated

**Tested Applications**

ELISA, IF, IHC-P, WB

**Immunogen**

Rabbit polyclonal PIBF1 antibody was raised against a 15 amino acid peptide near the carboxy terminus of human PIBF1. The immunogen is located within amino acids 610 - 660 of PIBF1.

**Target**

PIBF1

**Preservatives**

PIBF1 Antibody is supplied in PBS containing 0.02% sodium azide.

**Form/Appearance**

Liquid

**Concentration**

1 mg/mL

**Storage**

PIBF1 antibody can be stored at 4°C for three months and -20°C, stable for up to one year.

**Note**

For research use only

**Application notes**

PIBF1 antibody can be used for detection of PIBF1 by Western blot at 1 - 2 µg/mL. Antibody validated: Western Blot in human samples; Immunohistochemistry in human samples and Immunofluorescence in human samples. All other applications and species not yet tested.

**Isotype**

IgG

**Clonality**

Polyclonal

**MW**

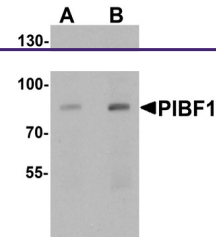
83 kDa

**Uniprot ID**
[Q8WXW3](https://www.uniprot.org/uniprot/Q8WXW3)
**NCBI**
[NP\\_006337](https://www.ncbi.nlm.nih.gov/nuccore/NP_006337)
**Dilution Range**

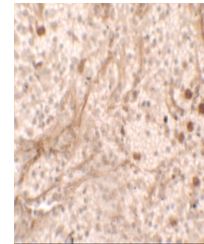
PIBF1 antibody can be used for detection of PIBF1 by Western blot at 1 - 2 µg/mL. Antibody validated: Western Blot in human samples; Immunohistochemistry in human samples and Immunofluorescence in human samples. All other applications and species not yet tested.

**Expiration Date**

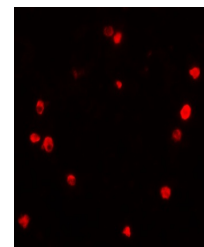
12 months from date of receipt.



Western blot analysis of PIBF1 in human ...



Immunohistochemistry of PIBF1 in human sp...



Immunofluorescence of PIBF1 in human sple...