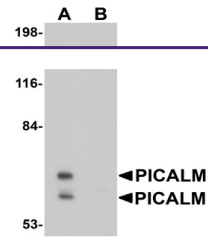
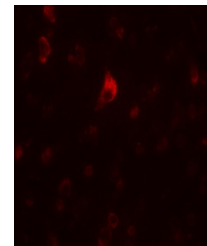

Product Datasheet

PICALM Antibody (orb1239232)

Description	PICALM Antibody
Species/Host	Rabbit
Reactivity	Human, Mouse, Rat
Conjugation	Unconjugated
Tested Applications	ELISA, IF, WB
Immunogen	PICALM antibody was raised against a 15 amino acid synthetic peptide from near the amino terminus of human PICALM. The immunogen is located within the first 50 amino acids of PICALM.
Target	PICALM
Preservatives	PICALM Antibody is supplied in PBS containing 0.02% sodium azide.
Form/Appearance	Liquid
Concentration	1 mg/mL
Storage	PICALM antibody can be stored at 4°C for three months and -20°C, stable for up to one year. As with all antibodies care should be taken to avoid repeated freeze thaw cycles. Antibodies should not be exposed to prolonged high temperatures.
Note	For research use only
Application notes	PICALM antibody can be used for detection of PICALM by Western blot at 1 µg/mL. For immunofluorescence start at 20 µg/mL. Antibody validated: Western Blot in mouse samples and Immunofluorescence in human samples. All other applications and species not yet tested.
Isotype	IgG
Clonality	Polyclonal
Uniprot ID	Q13492
NCBI	NP_009097
Dilution Range	PICALM antibody can be used for detection of PICALM by Western blot at 1 µg/mL. For immunofluorescence start at 20 µg/mL. Antibody validated: Western Blot in mouse samples and Immunofluorescence in human samples. All other applications and species not yet tested.
Expiration Date	12 months from date of receipt.



Western blot analysis of PICALM in EL4 c...



Immunofluorescence of PICALM in human br...