
Product Datasheet

PIGY Antibody (orb1239228)

Description

PIGY Antibody

Species/Host

Rabbit

Reactivity

Human, Mouse

Conjugation

Unconjugated

Tested Applications

ELISA, IF, IHC-P, WB

Immunogen

PIG-Y antibody was raised against a 16 amino acid synthetic peptide near the center of human PIG-Y. The immunogen is located within amino acids 50 - 100 of PIG-Y.

Target

PIGY

Preservatives

PIG-Y Antibody is supplied in PBS containing 0.02% sodium azide.

Form/Appearance

Liquid

Concentration

1 mg/mL

Storage

PIG-Y antibody can be stored at 4°C for three months and -20°C, stable for up to one year. As with all antibodies care should be taken to avoid repeated freeze thaw cycles. Antibodies should not be exposed to prolonged high temperatures.

Note

For research use only

Application notes

PIG-Y antibody can be used for detection of PIG-Y by Western blot at 1 - 2 µg/mL. Despite its predicted molecular weight, PIG-Y often migrates at 28-30 kDa in SDS-PAGE. Antibody can also be used for immunohistochemistry starting at 2.5 µg/mL. For immunofluorescence start at 20 µg/mL. Antibody validated: Western Blot in human samples; Immunohistochemistry in human samples and Immunofluorescence in human samples. All other applications and species not yet tested.

Isotype

IgG

Clonality

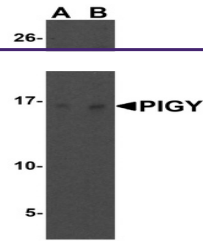
Polyclonal

MW

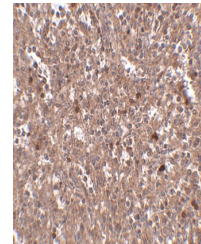
Predicted: 8 kDa Observed: 16 kDa

Uniprot ID
[Q3MUY2](#)
NCBI
[NP_116295](#)
Dilution Range

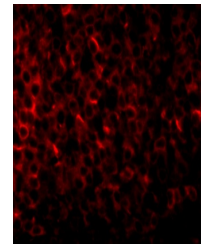
PIG-Y antibody can be used for detection of PIG-Y by Western blot at 1 - 2 µg/mL. Despite its predicted molecular weight, PIG-Y often migrates at 28-30 kDa



Western blot analysis of PIG-Y in human ...



Immunohistochemistry of PIG-Y in human s...



Immunofluorescence of PIGY in human sple...