

---

## Product Datasheet

### AXIN2 Antibody (orb1239225)

**Description**

AXIN2 Antibody

**Species/Host**

Rabbit

**Reactivity**

Human, Mouse, Rat

**Conjugation**

Unconjugated

**Tested**

ELISA, IF, IHC-P, WB

**Applications**
**Immunogen**

AXIN2 antibody was raised against a 20 amino acid synthetic peptide near the carboxy terminus of human AXIN2. The immunogen is located within amino acids 780 - 830 of AXIN2.

**Target**

AXIN2

**Preservatives**

AXIN2 Antibody is supplied in PBS containing 0.02% sodium azide.

**Form/Appearance**

Liquid

**Concentration**

1 mg/mL

**Storage**

AXIN2 antibody can be stored at 4°C for three months and -20°C, stable for up to one year. As with all antibodies care should be taken to avoid repeated freeze thaw cycles. Antibodies should not be exposed to prolonged high temperatures.

**Note**

For research use only

**Application notes**

AXIN2 antibody can be used for detection of AXIN2 by Western blot at 1 µg/mL. Antibody can also be used for immunohistochemistry starting at 5 µg/mL. For immunofluorescence start at 20 µg/mL. Antibody validated: Western Blot in mouse samples; Immunohistochemistry in mouse and rat samples and Immunofluorescence in mouse and rat samples. All other applications and species not yet tested.

**Isotype**

IgG

**Clonality**

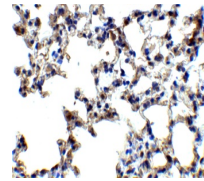
Polyclonal

**MW**

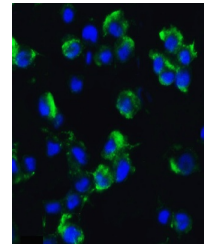
85, 93 kDa

**Uniprot ID**
[Q9Y2T1](#)
**NCBI**
[AAF22799](#)
**Dilution Range**

AXIN2 antibody can be used for detection of AXIN2 by Western blot at 1 µg/mL. Antibody can also be used for immunohistochemistry starting at 5 µg/mL. For immunofluorescence start at 20 µg/mL. Antibody validated: Western Blot in mouse samples;

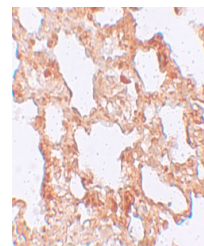


Immunohistochemistry of AXIN2 in mouse l...



Immunofluorescence of AXIN2 in Rat Lung

...



Immunohistochemistry of AXIN2 in rat lun...