
Product Datasheet

ATF6 Antibody (orb1239224)

Description

ATF6 Antibody

Species/Host

Rabbit

Reactivity

Human, Mouse, Rat

Conjugation

Unconjugated

Tested Applications

ELISA, IF, IHC, WB

Immunogen

ATF6 antibody was raised against a 17 amino acid synthetic peptide from near the amino terminus of human ATF6. The immunogen is located within amino acids 30 - 80 of ATF6.

Target

ATF6

Preservatives

ATF6 Antibody is supplied in PBS containing 0.02% sodium azide.

Form/Appearance

Liquid

Concentration

1 mg/mL

Storage

ATF6 antibody can be stored at 4°C for three months and -20°C, stable for up to one year. As with all antibodies care should be taken to avoid repeated freeze thaw cycles. Antibodies should not be exposed to prolonged high temperatures.

Note

For research use only

Application notes

WB: 0.5-1 µg/mL; IHC: 5 µg/mL; IF: 20 µg/mL. Antibody validated: Western Blot in human, mouse and rat samples; Immunohistochemistry in mouse and rat samples; Immunofluorescence in human samples. All other applications and species not yet tested.

Isotype

IgG

Clonality

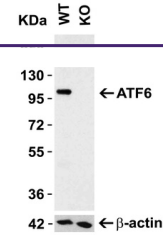
Polyclonal

Uniprot ID
[P18850](#)
NCBI
[NP_031374](#)
Dilution Range

WB: 0.5-1 µg/mL; IHC: 5 µg/mL; IF: 20 µg/mL. Antibody validated: Western Blot in human, mouse and rat samples; Immunohistochemistry in mouse and rat samples; Immunofluorescence in human samples. All other applications and species not yet tested.

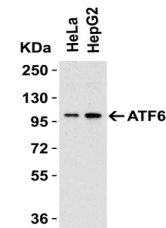
Expiration Date

12 months from date of receipt.

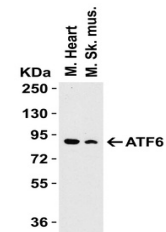


KO Validation of ATF6.

Loading: 15 µg o...



WB Validation in Human Cell Lines. Loadi...



WB Validation in Mouse Tissue. Loading: ...